

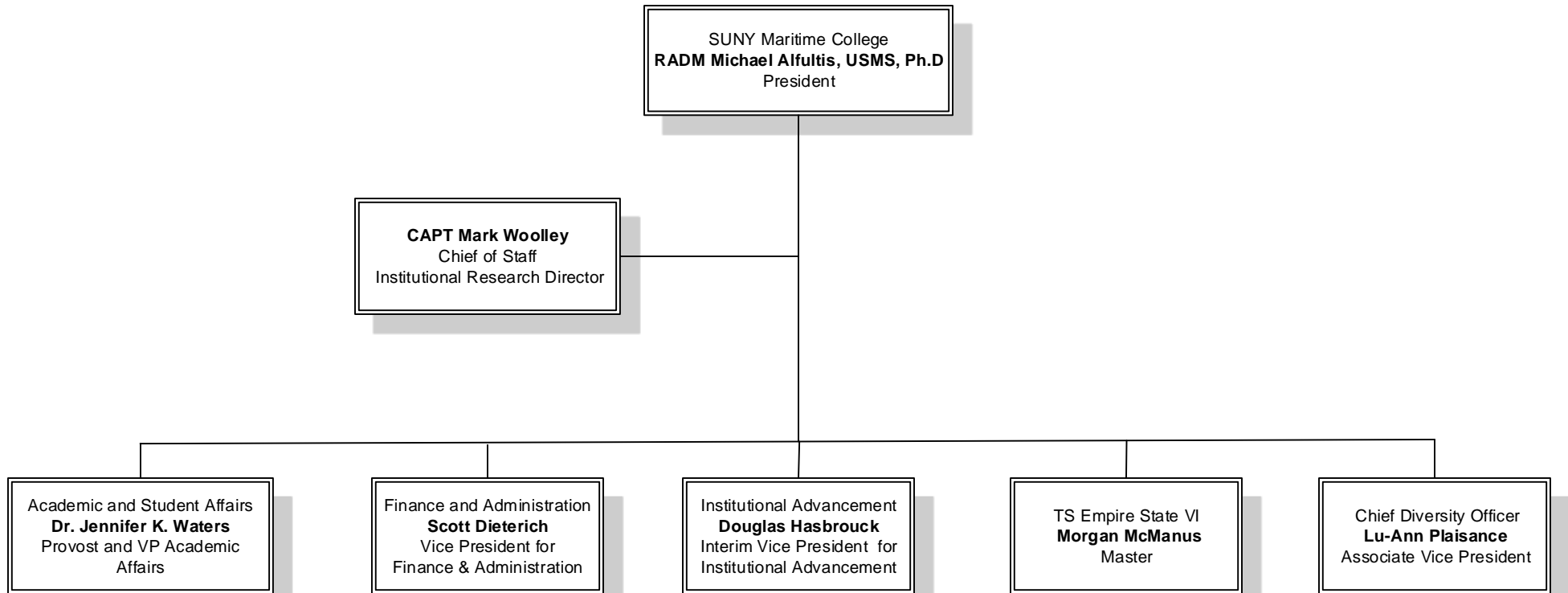


Organizational Chart

As of September 2020

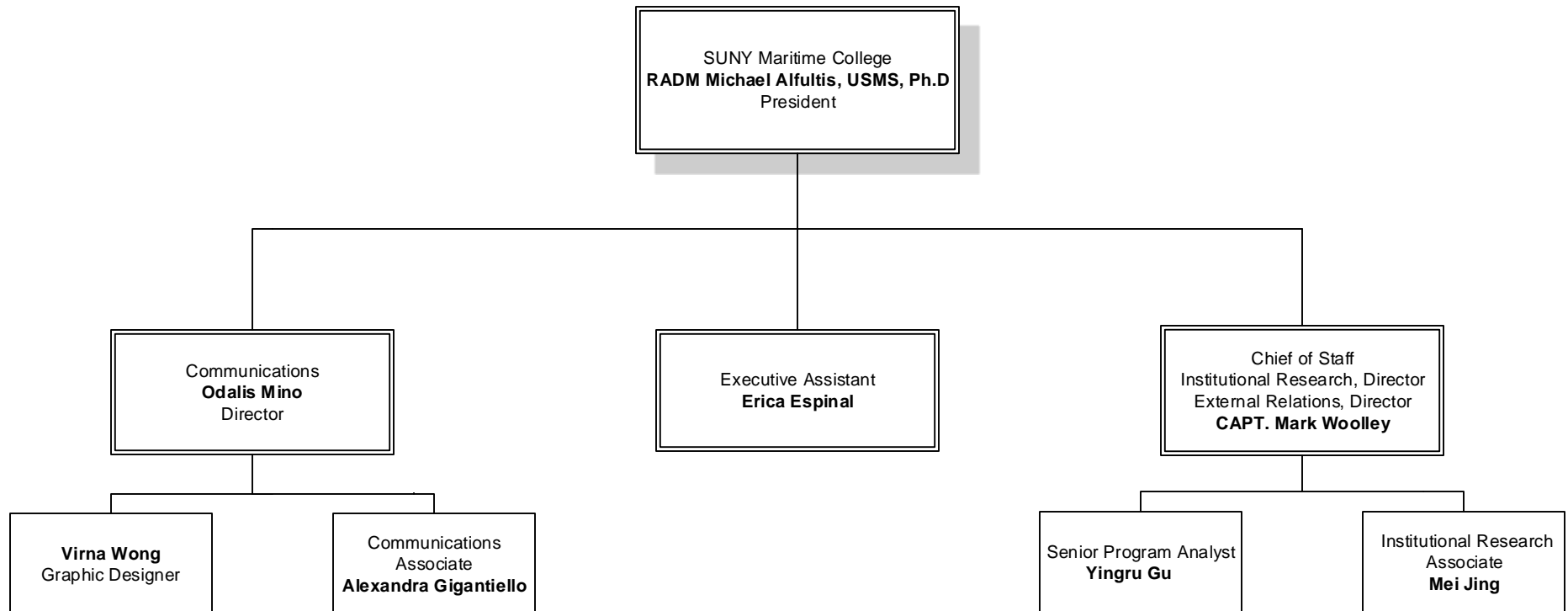


Leadership



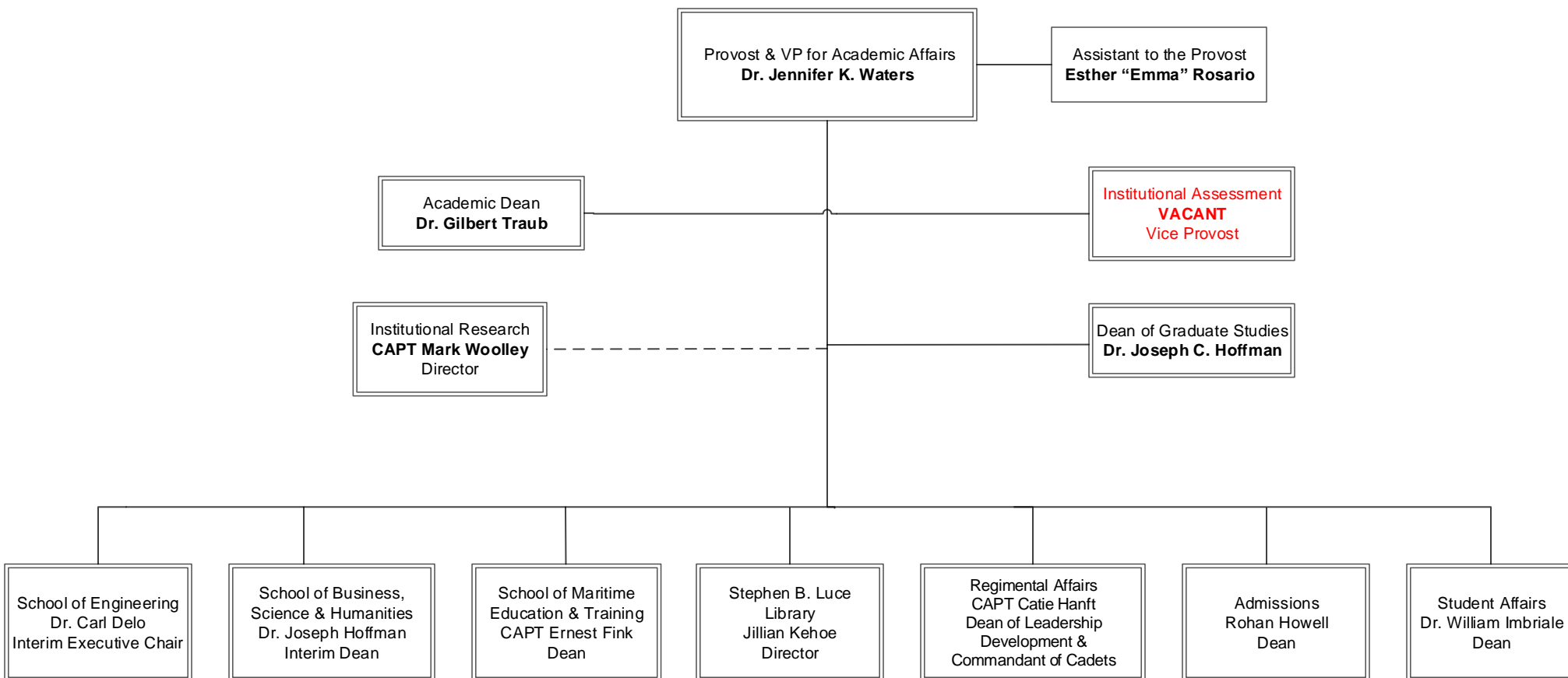


OFFICE OF THE PRESIDENT



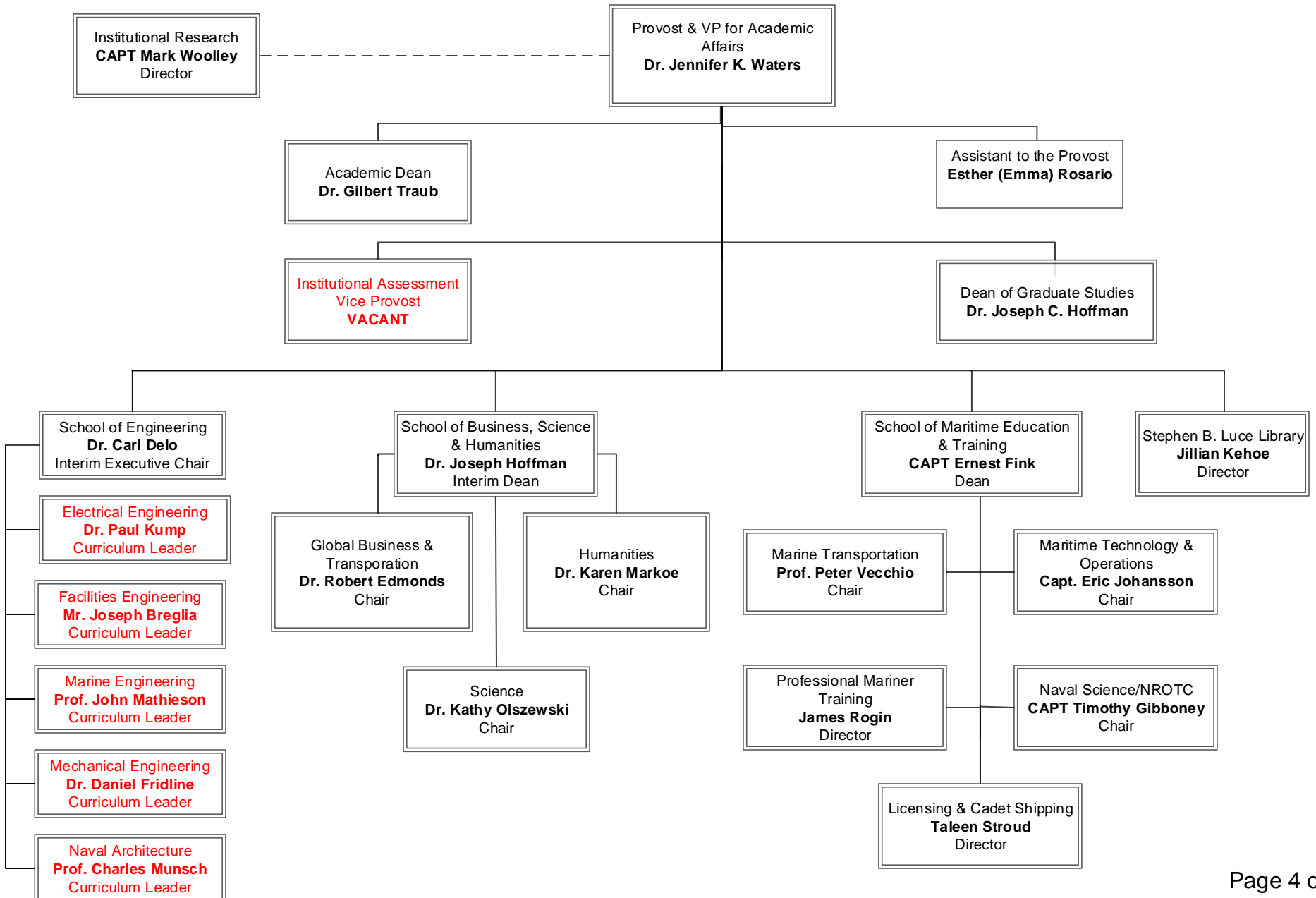


OFFICE OF THE PROVOST



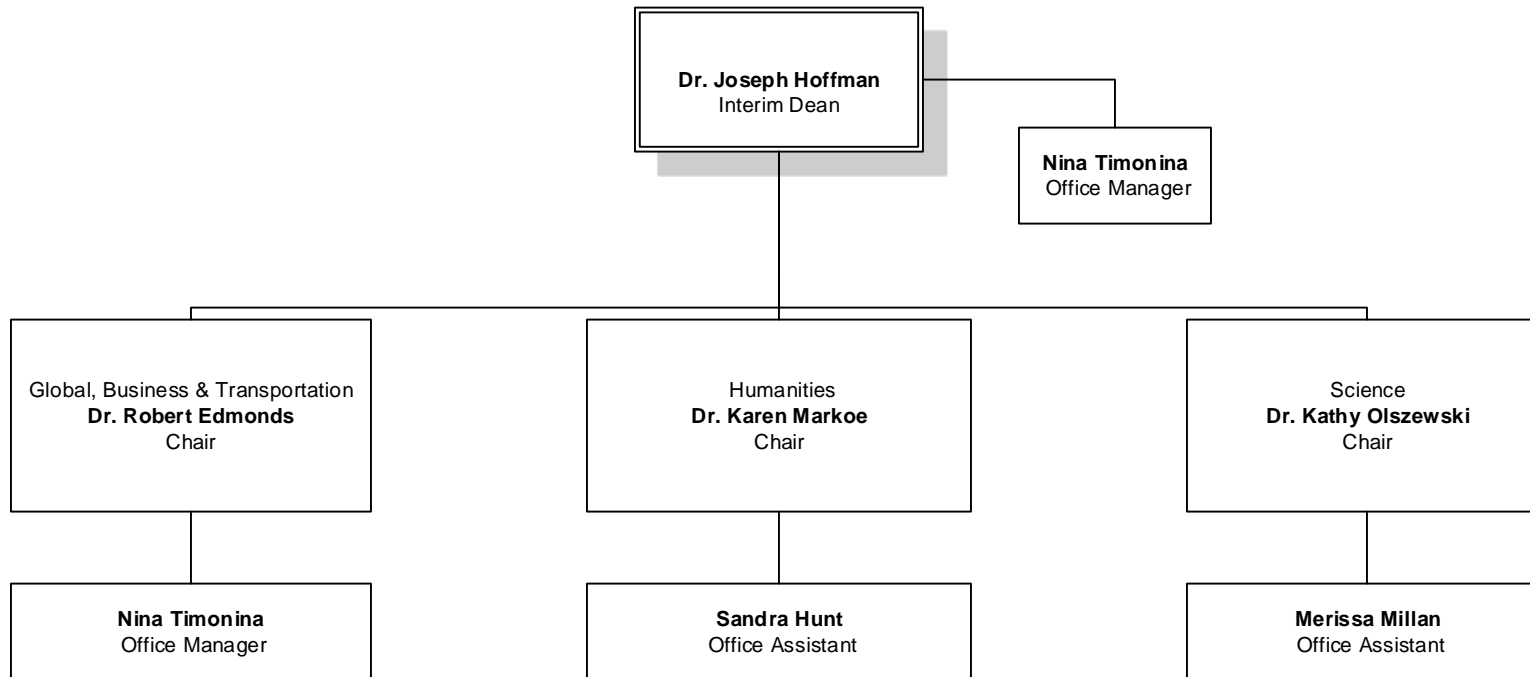


ACADEMIC AFFAIRS



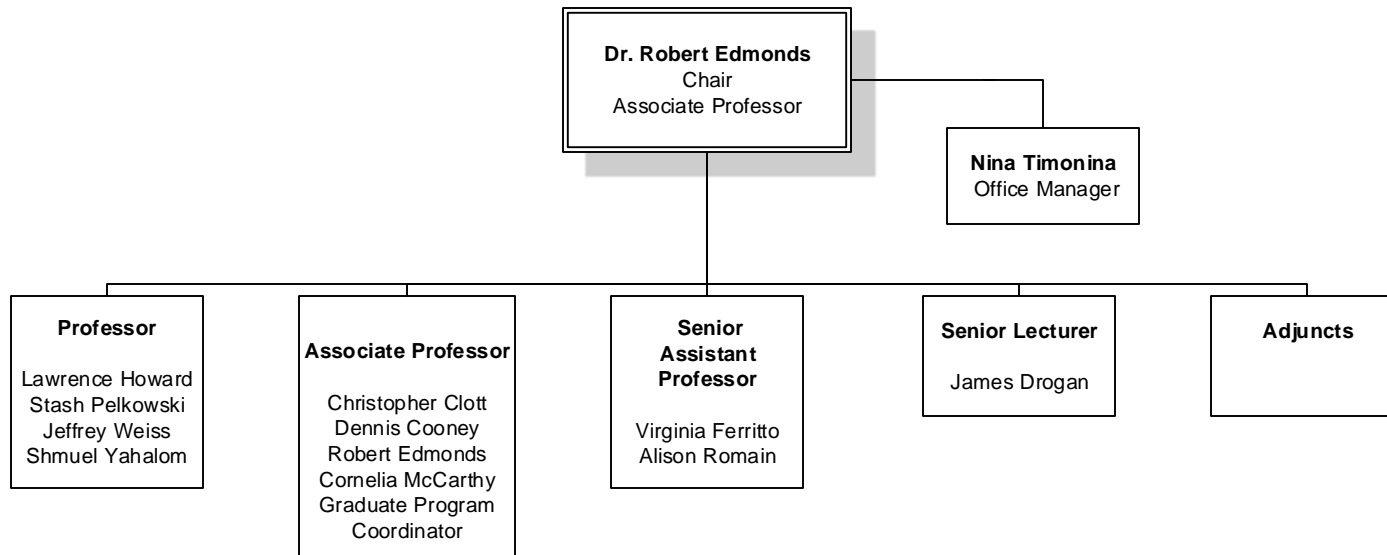


SCHOOL OF BUSINESS, SCIENCE & HUMANITIES



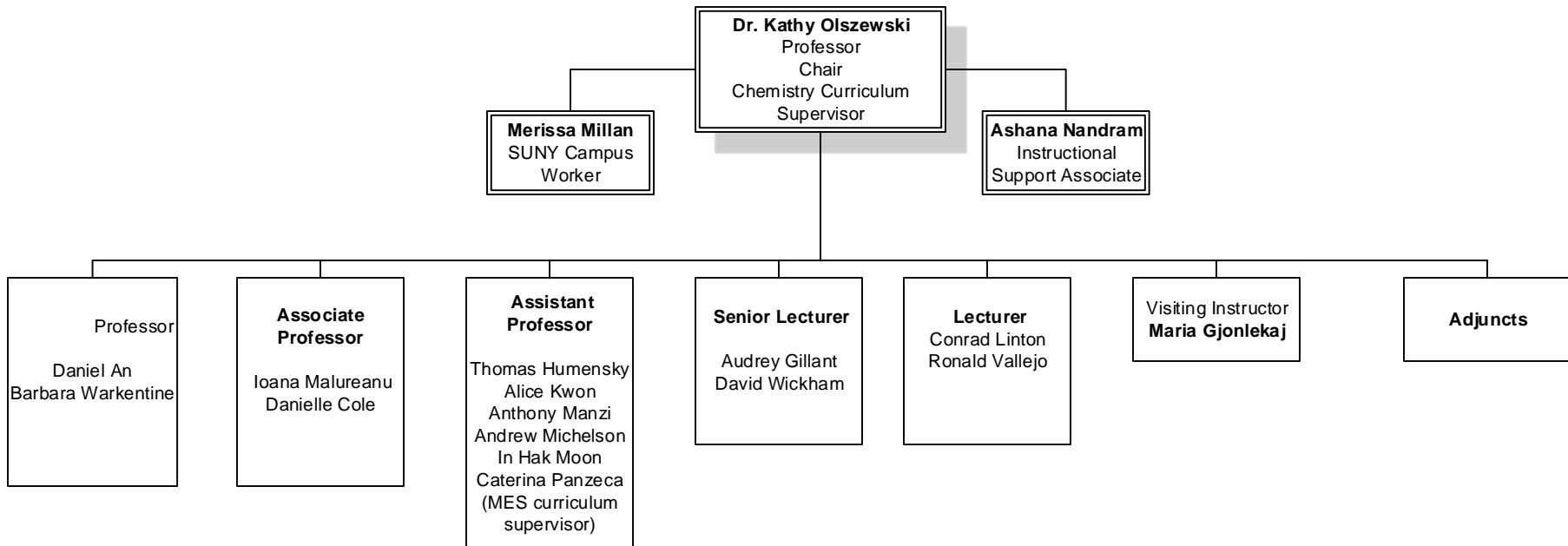


GLOBAL BUSINESS & TRANSPORTATION

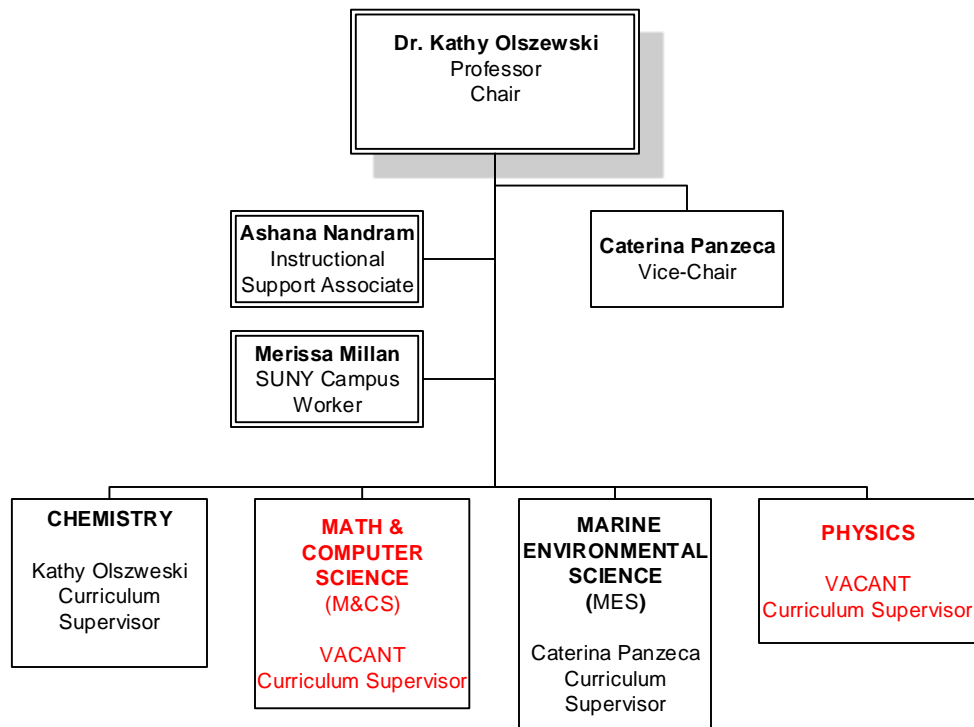




SCIENCE

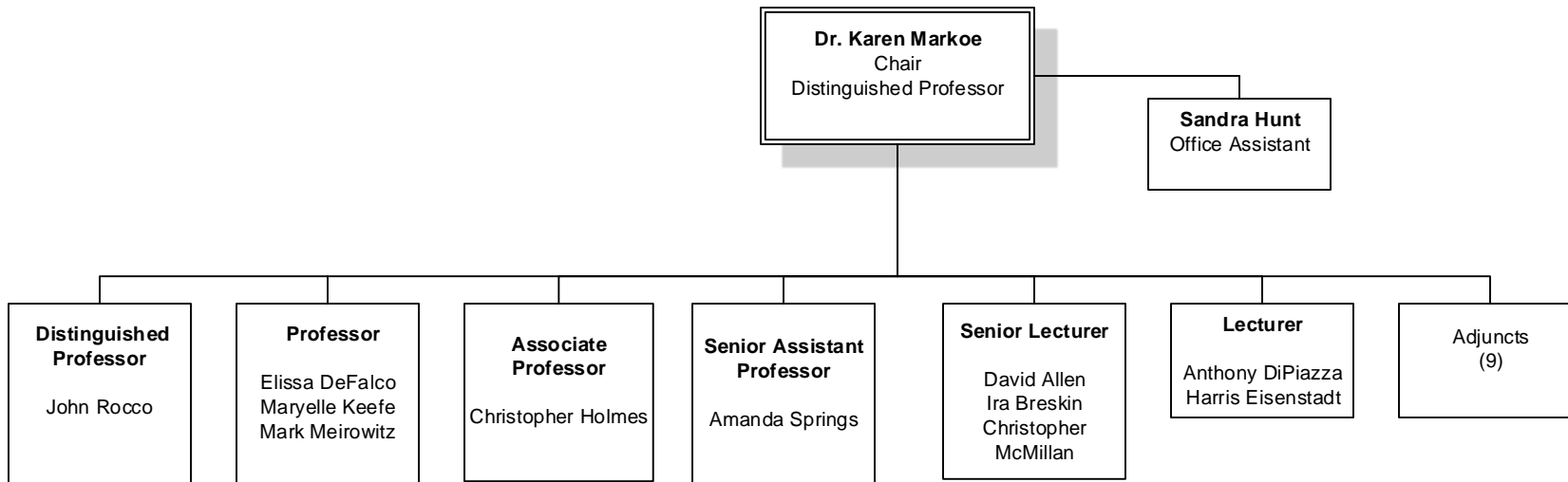


SCIENCE



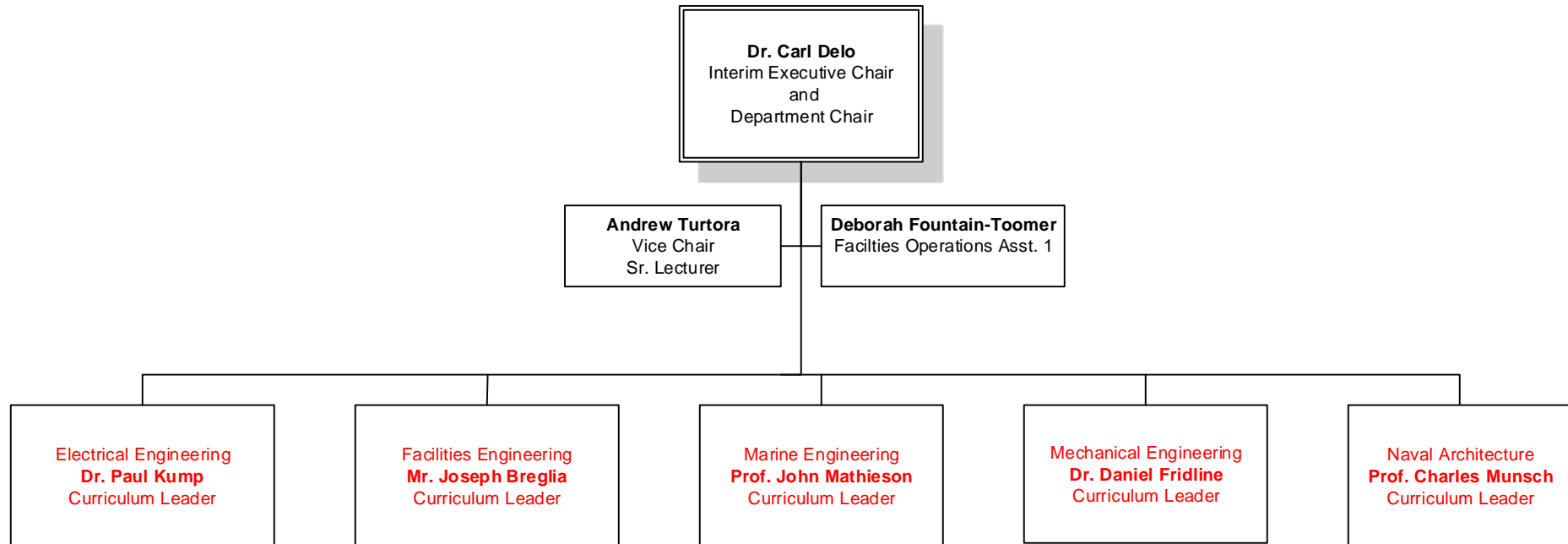


HUMANITIES

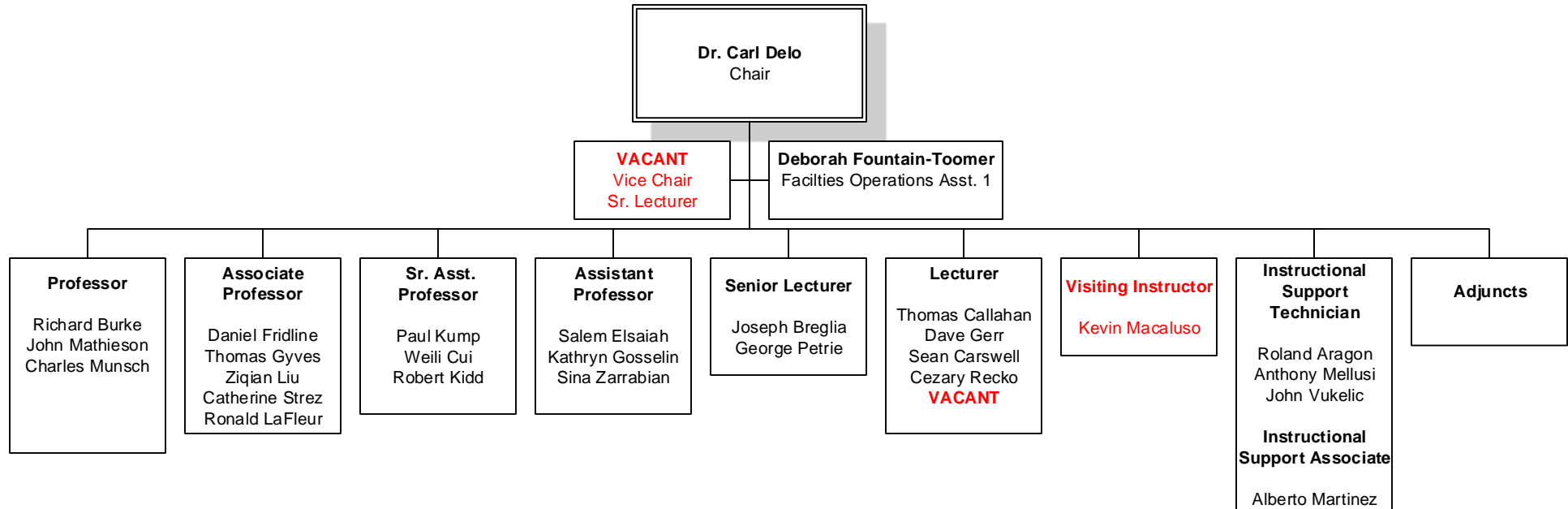




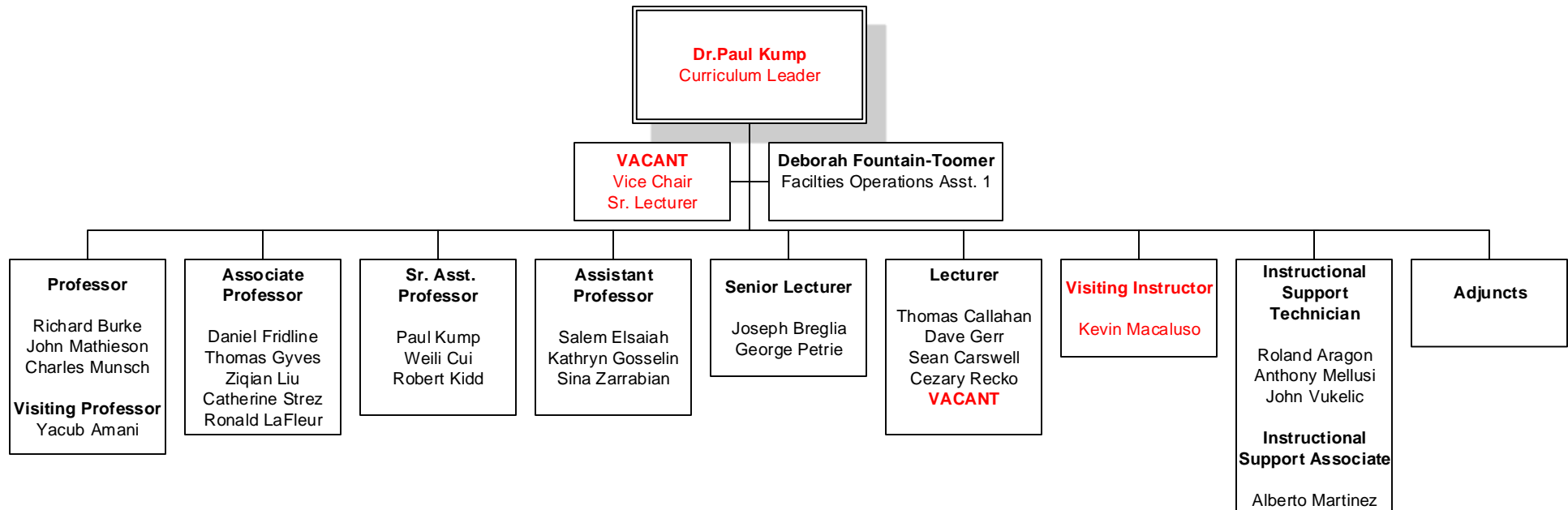
SCHOOL OF ENGINEERING



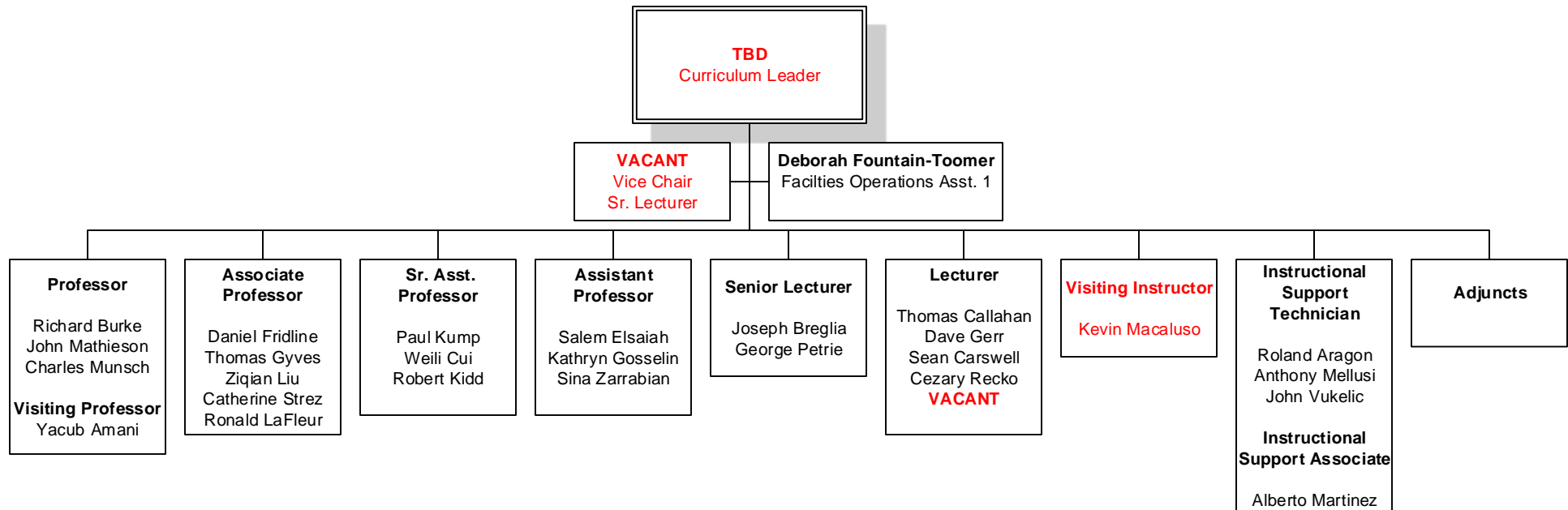
ENGINEERING



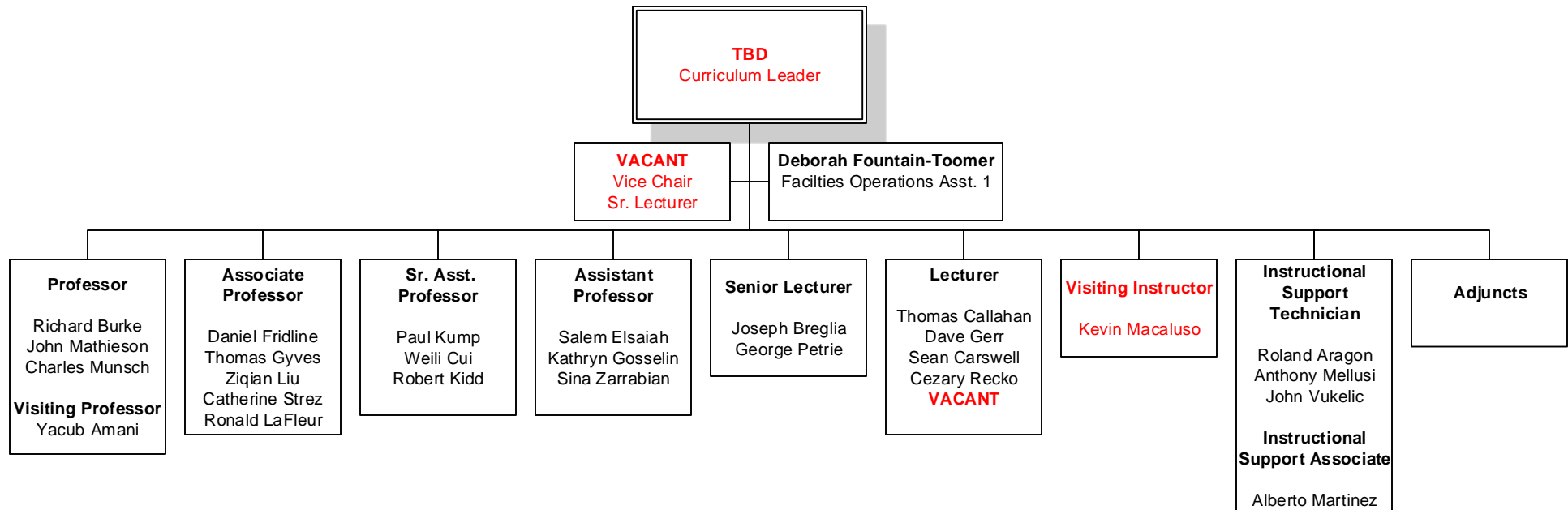
ELECTRICAL ENGINEERING



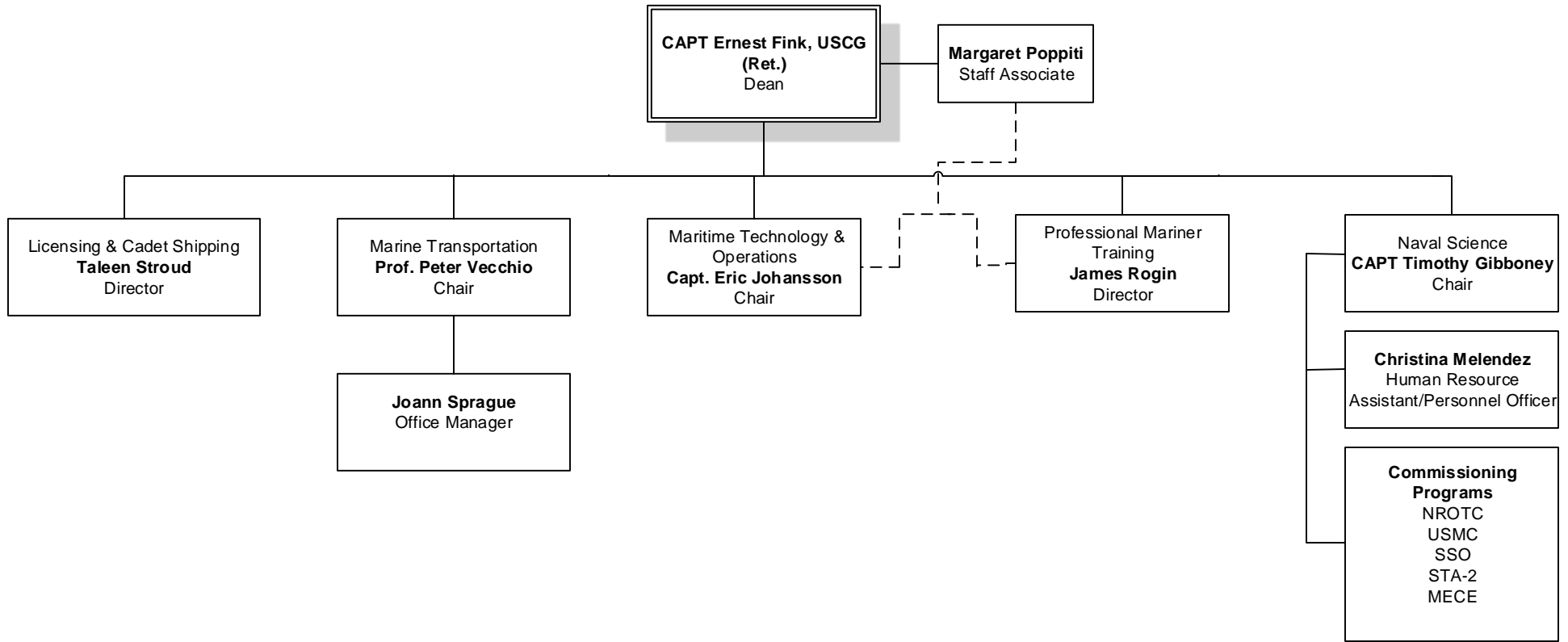
FACILITIES and MECHANICAL ENGINEERING



MARINE ENGINEERING and NAVAL ARCHITECTURE

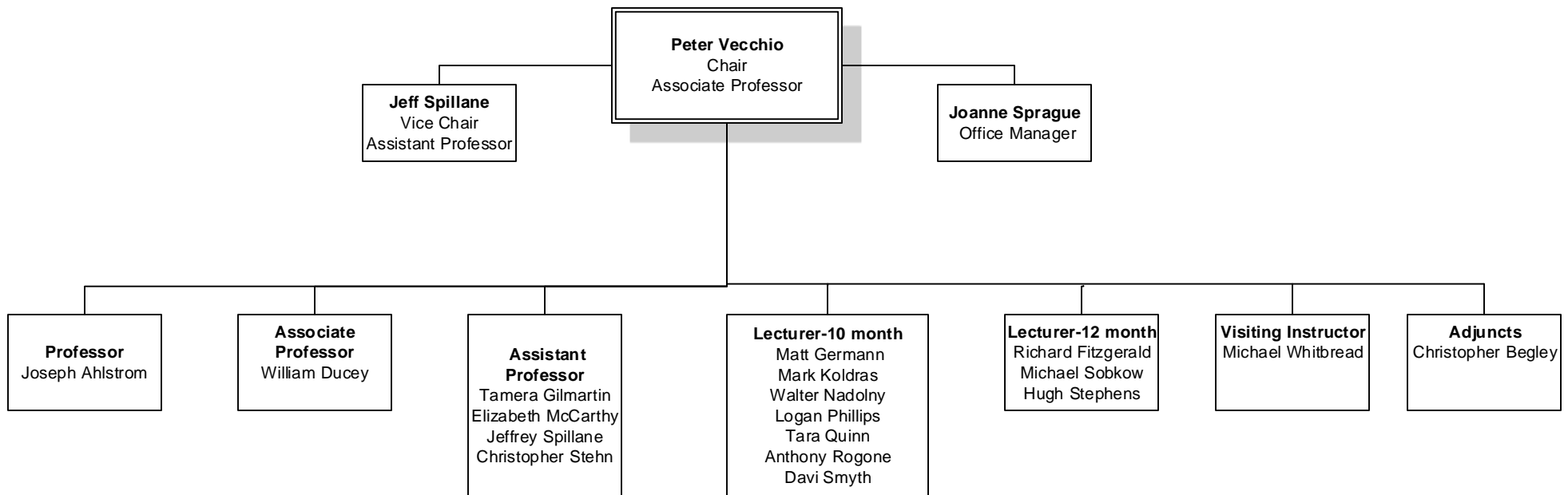


SCHOOL OF MARITIME EDUCATION & TRAINING



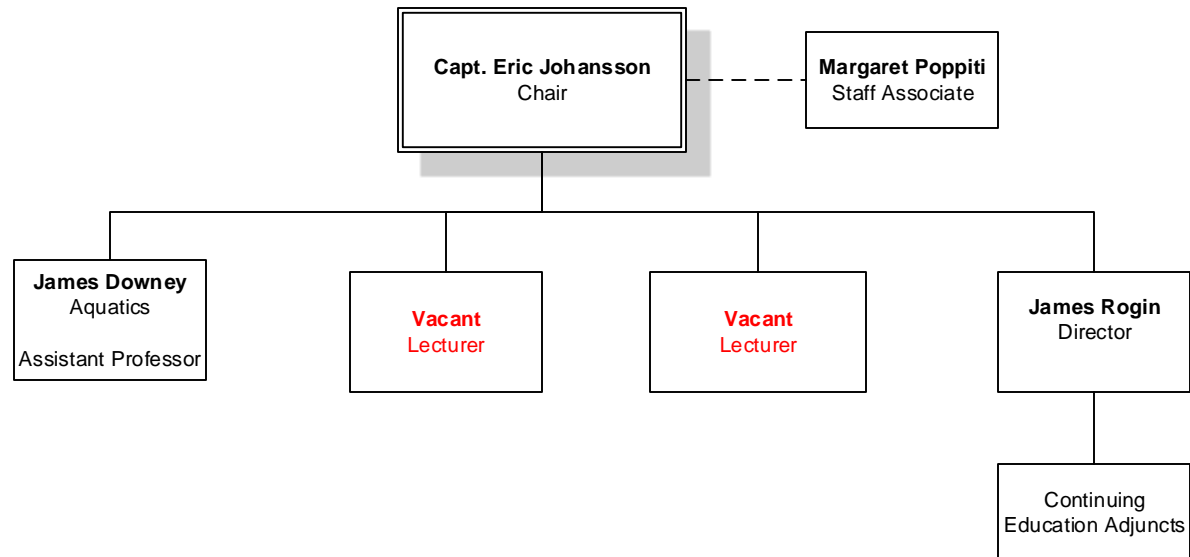


MARINE TRANSPORTATION



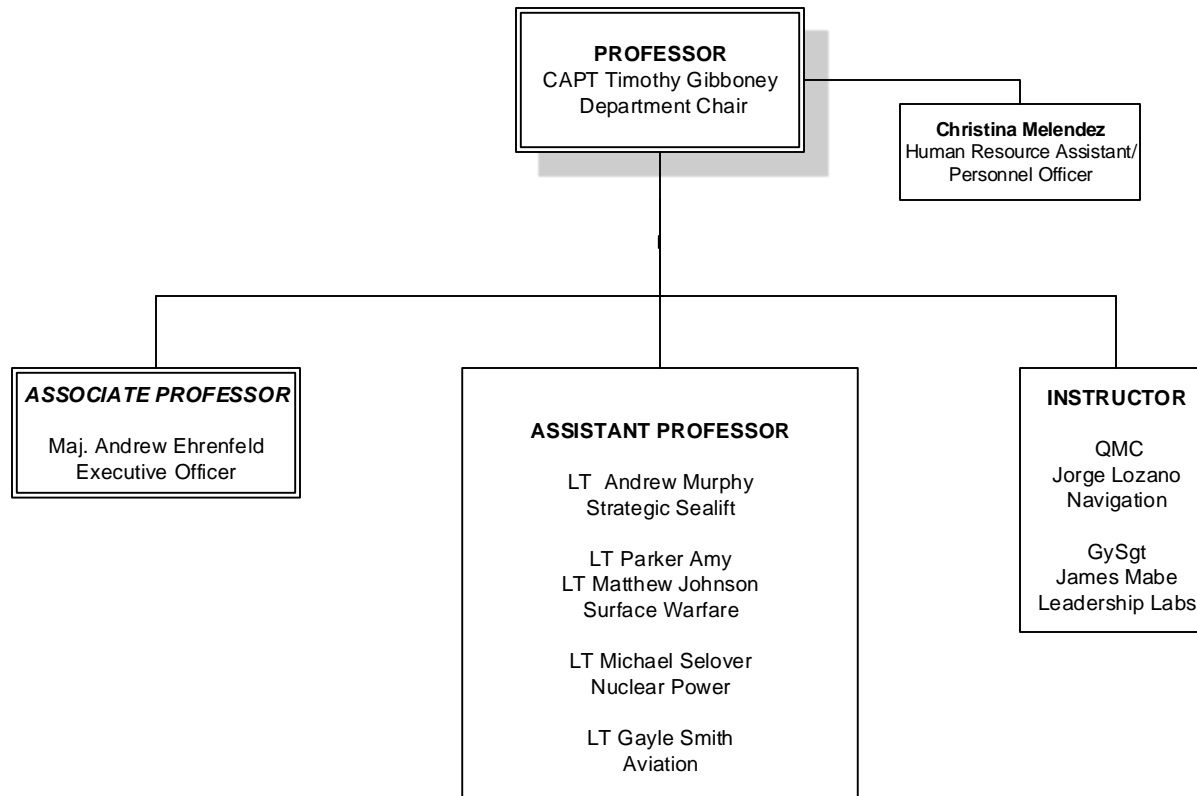


MARITIME TECHNOLOGY & OPERATIONS



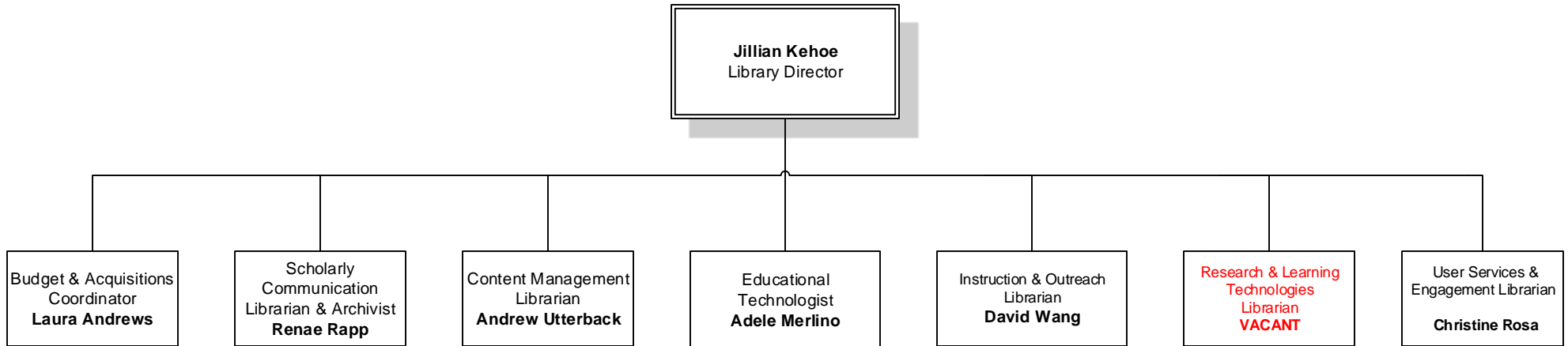


NAVAL SCIENCE & NROTC



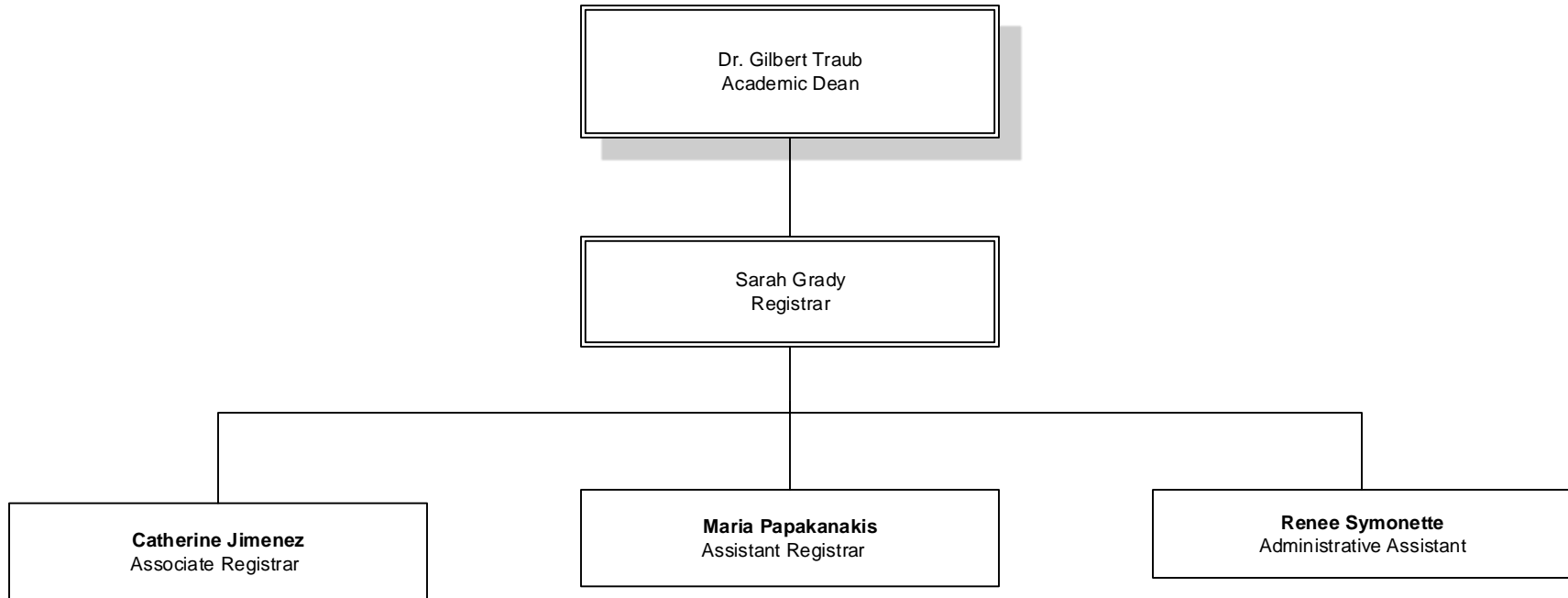


LIBRARY

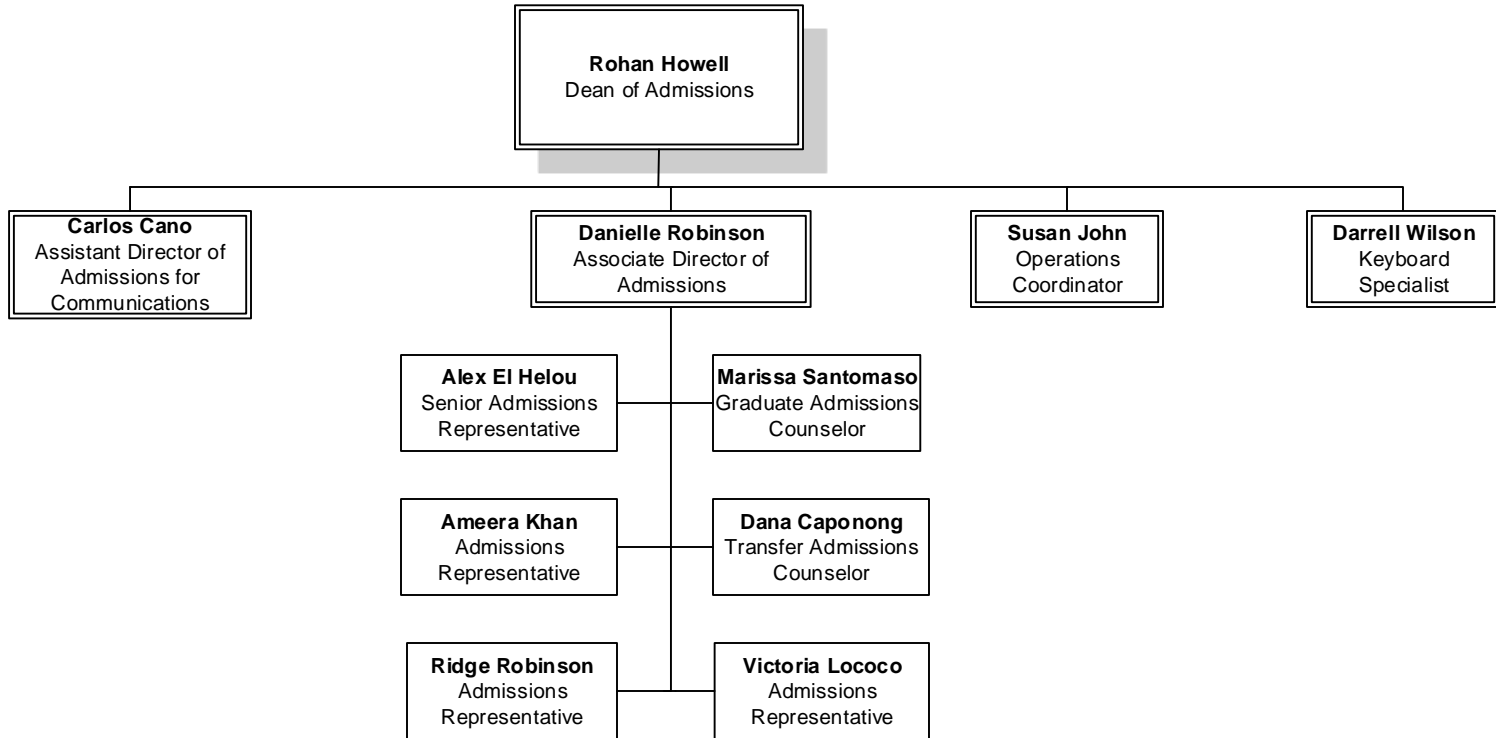




Academic Services

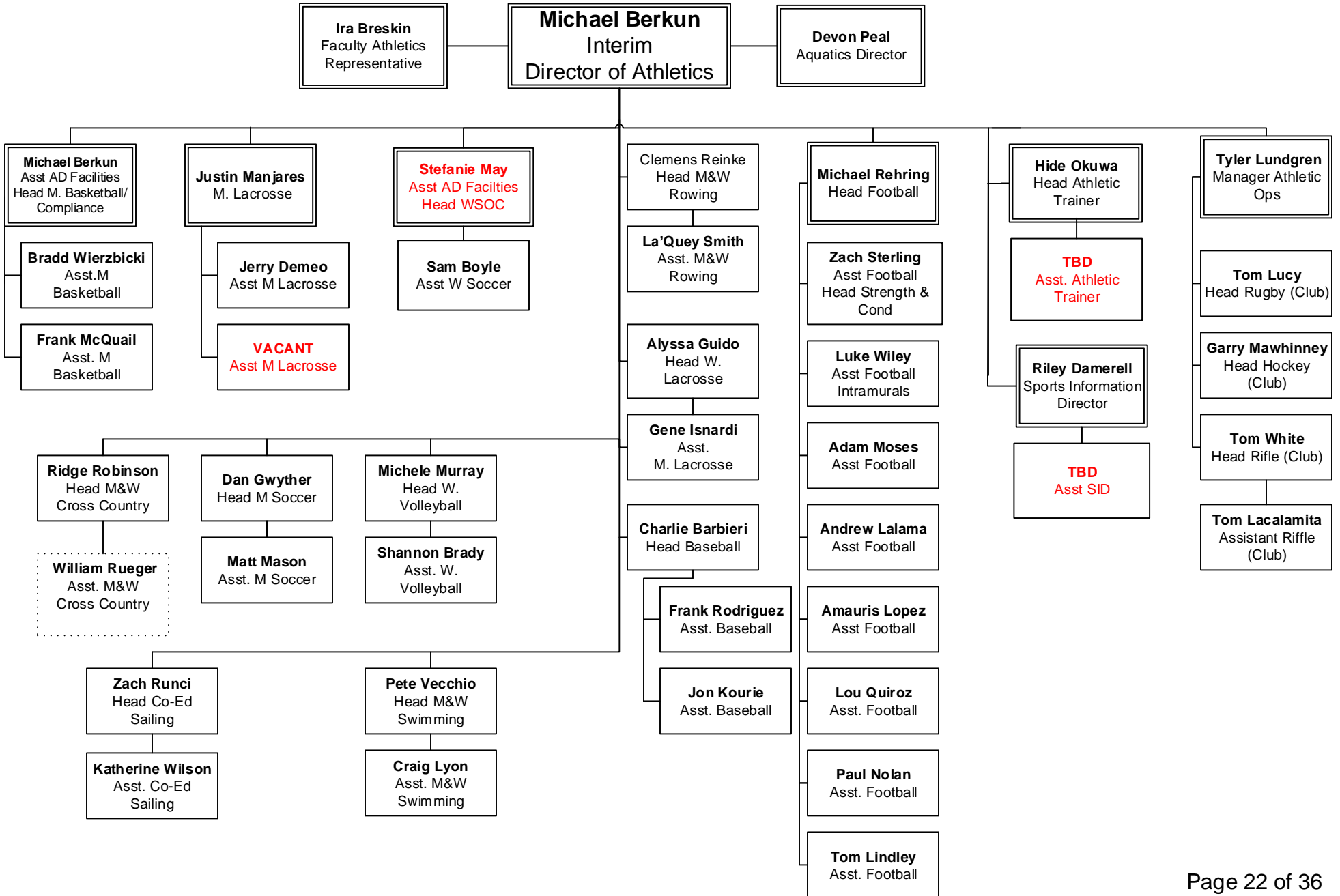


ADMISSIONS



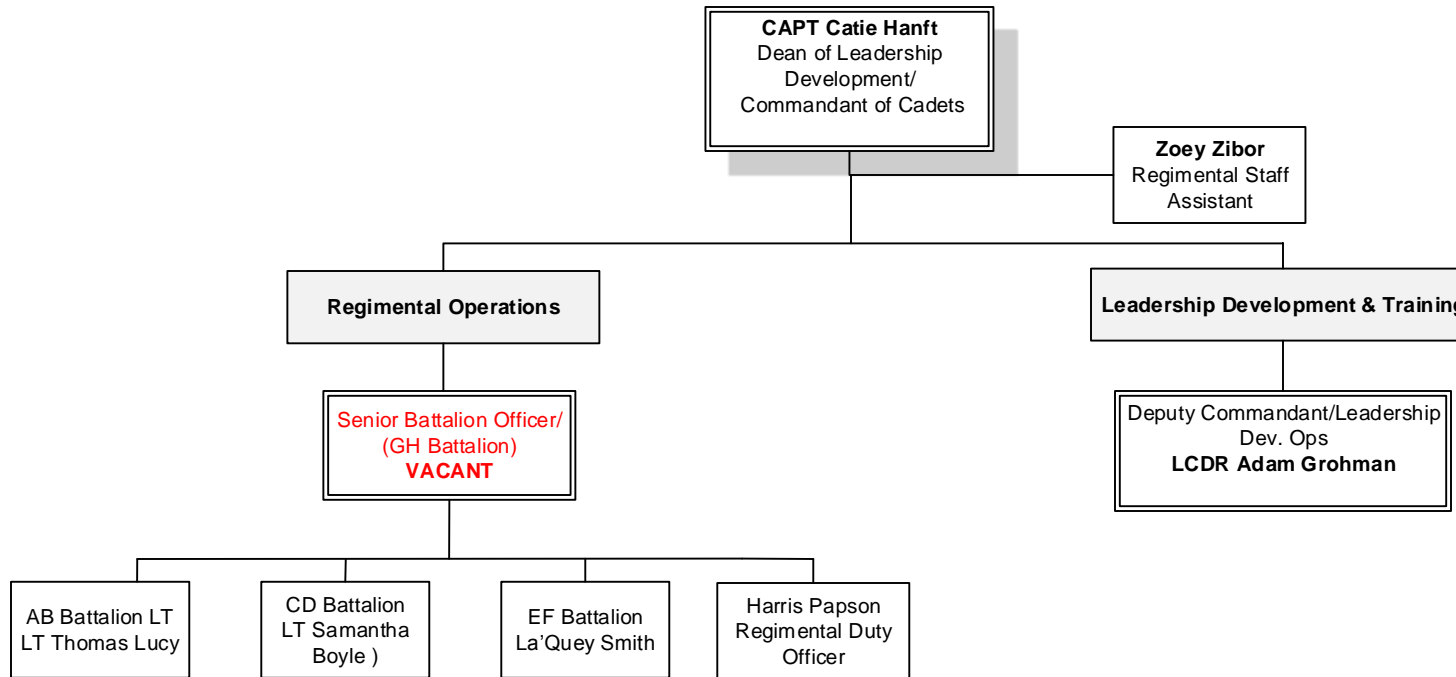


ATHLETICS



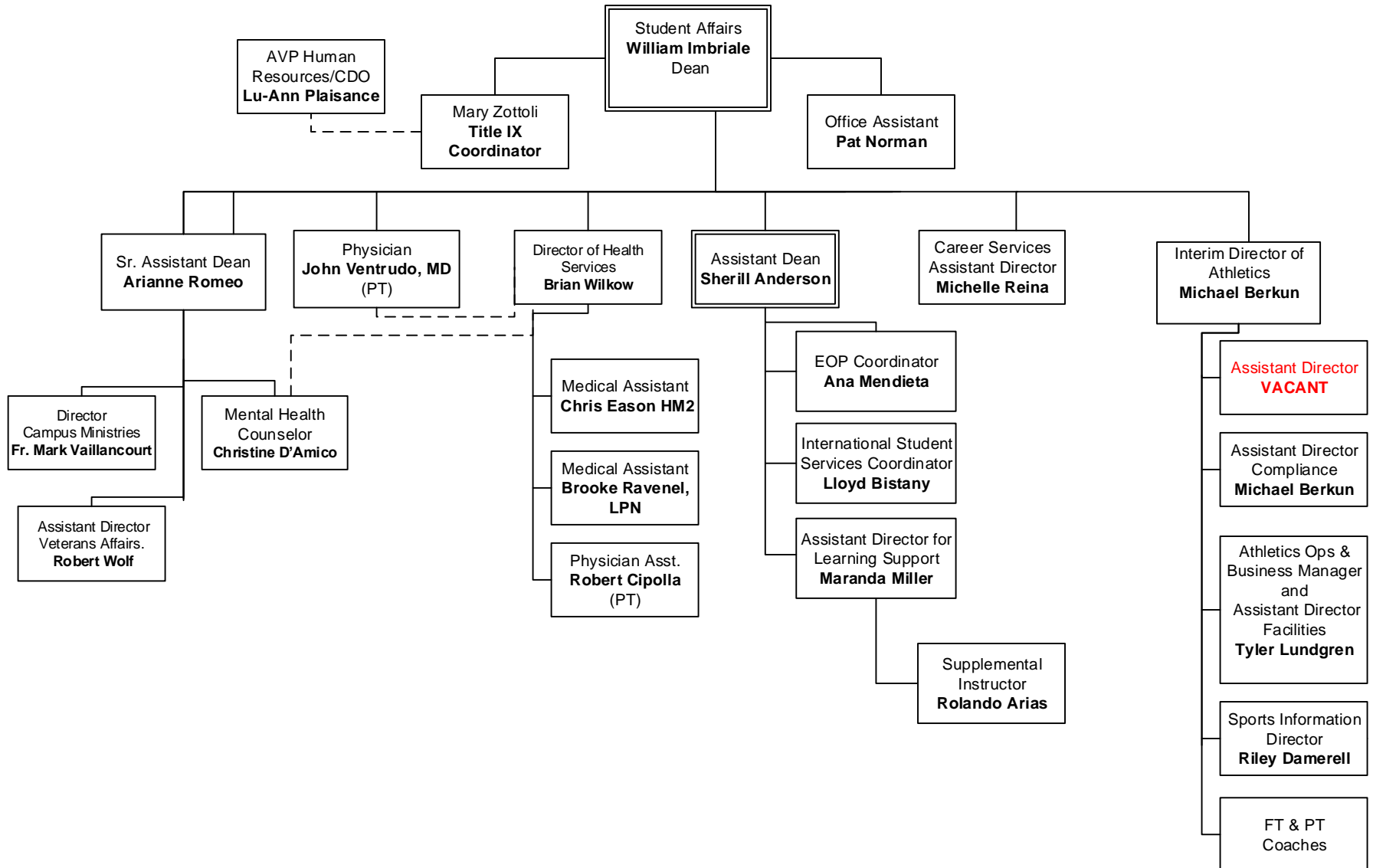


REGIMENT OF CADETS



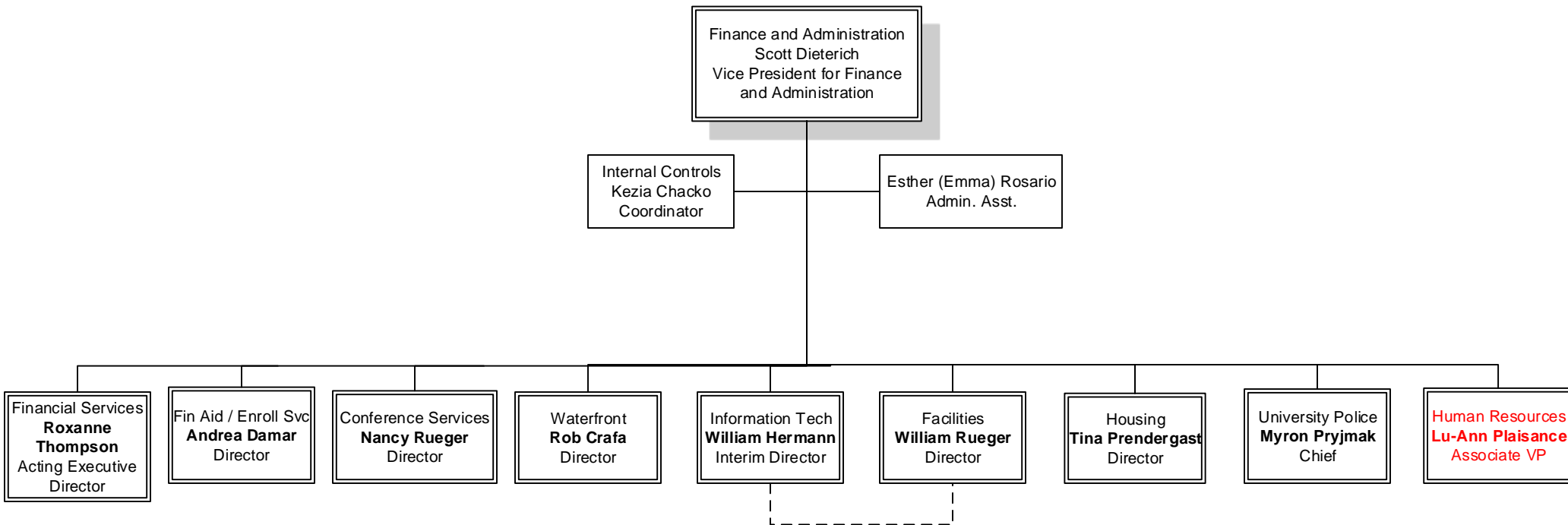


STUDENT AFFAIRS



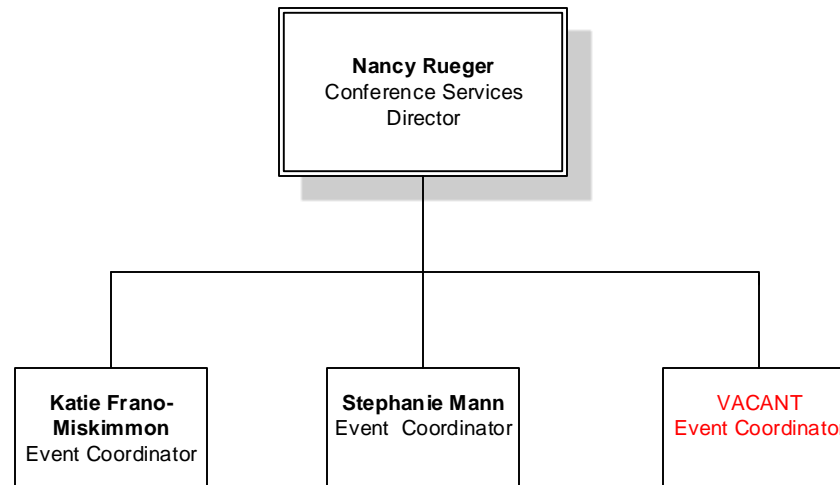


FINANCE AND ADMINISTRATION



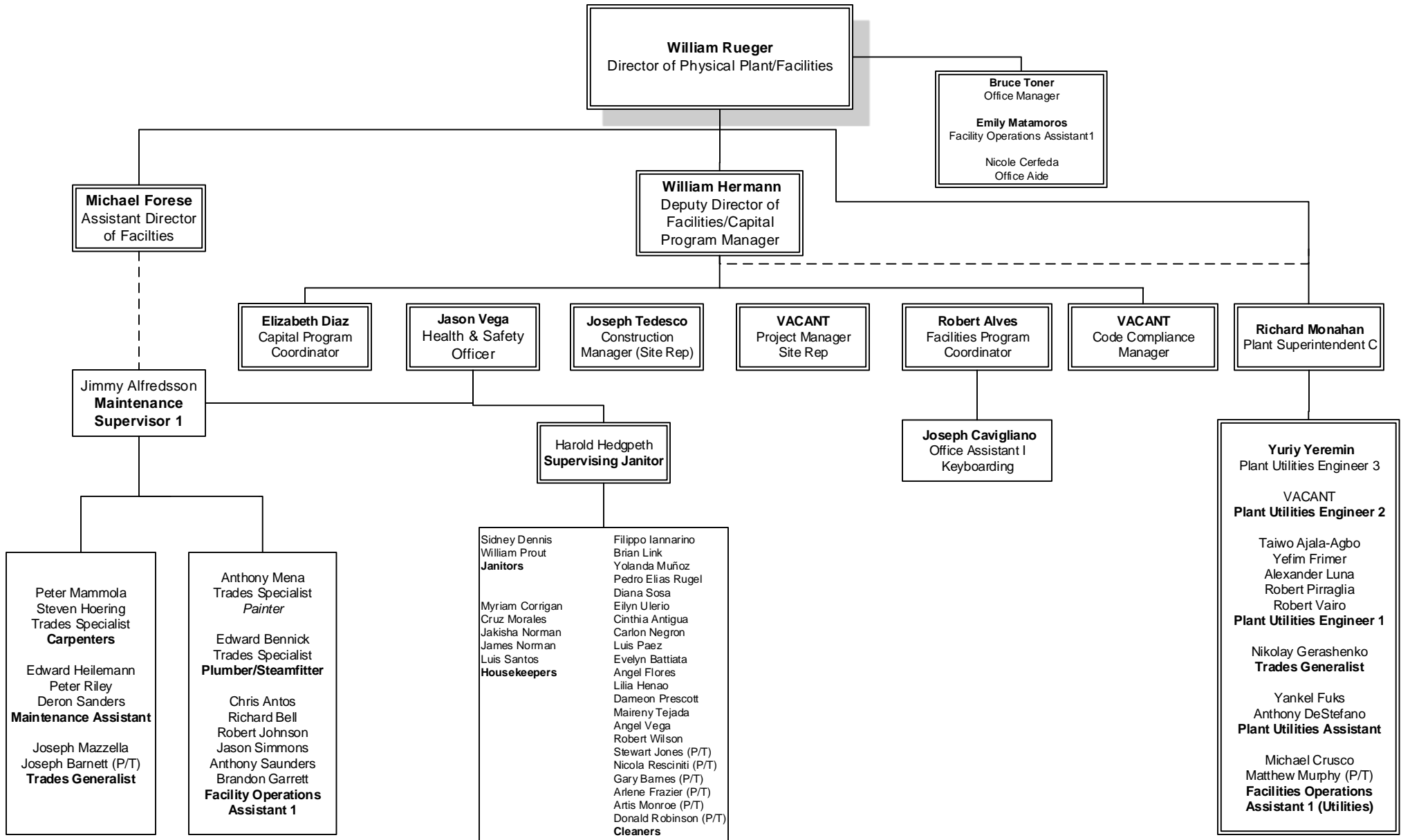


Conference Services



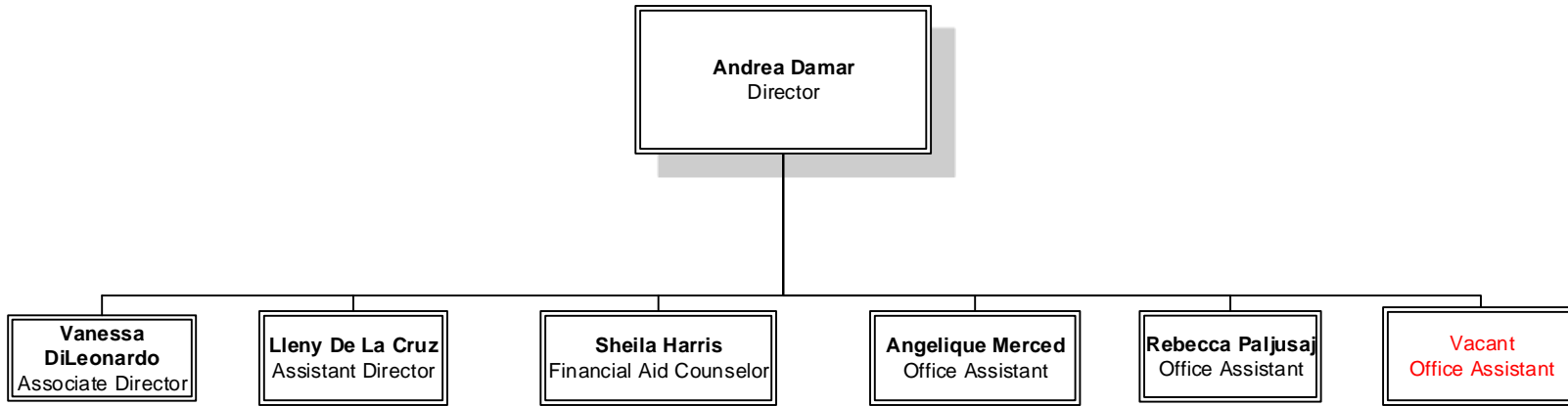


PHYSICAL PLANT/FACILITIES

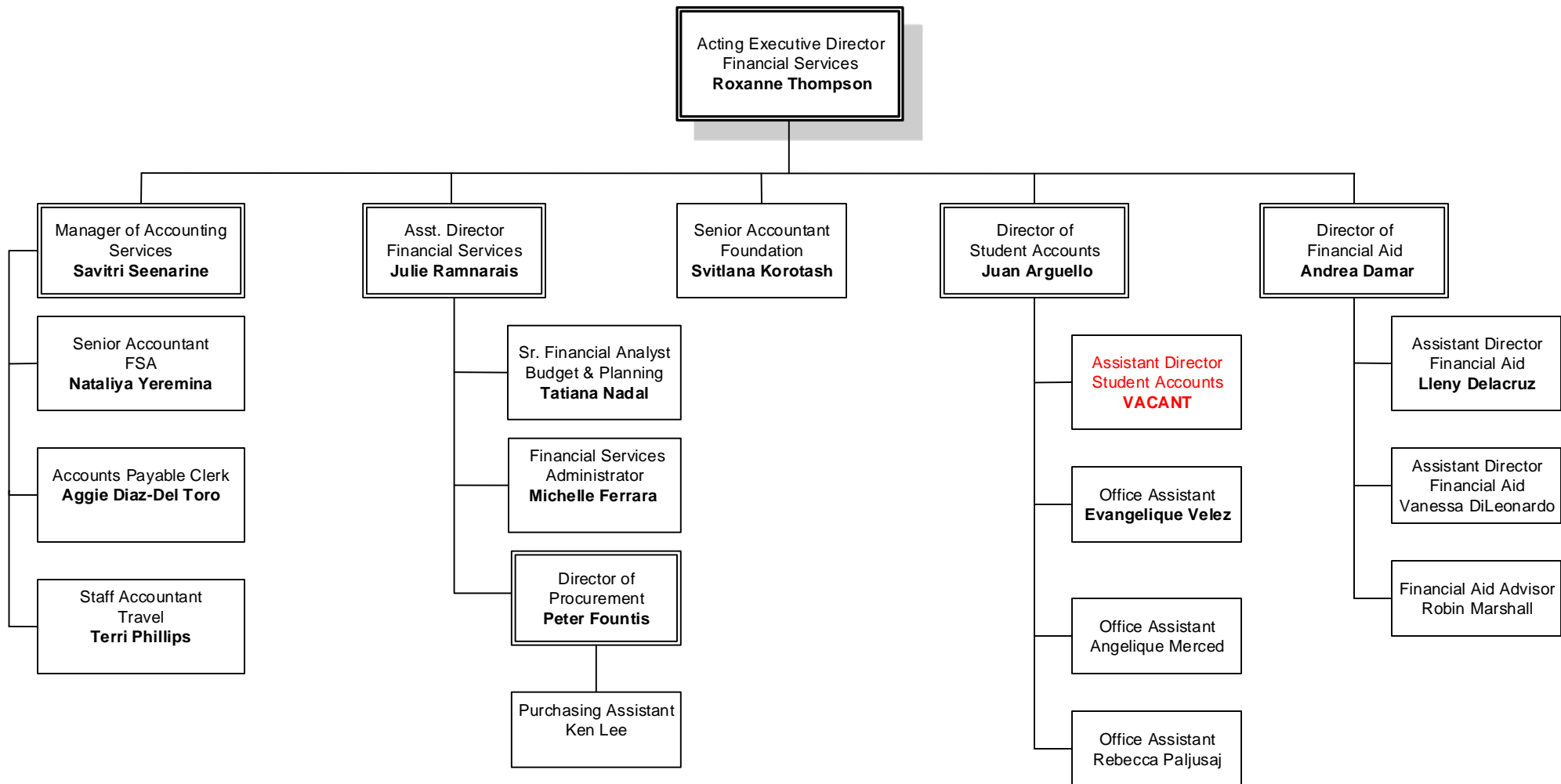




Financial Aid

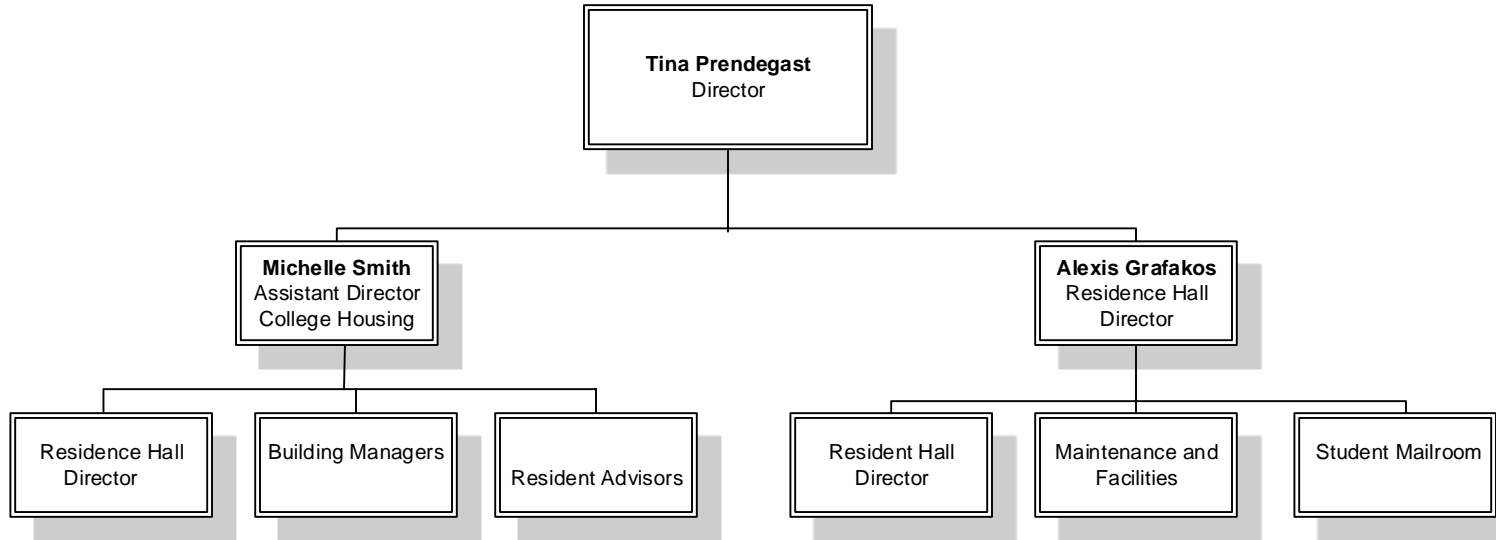


Financial Services



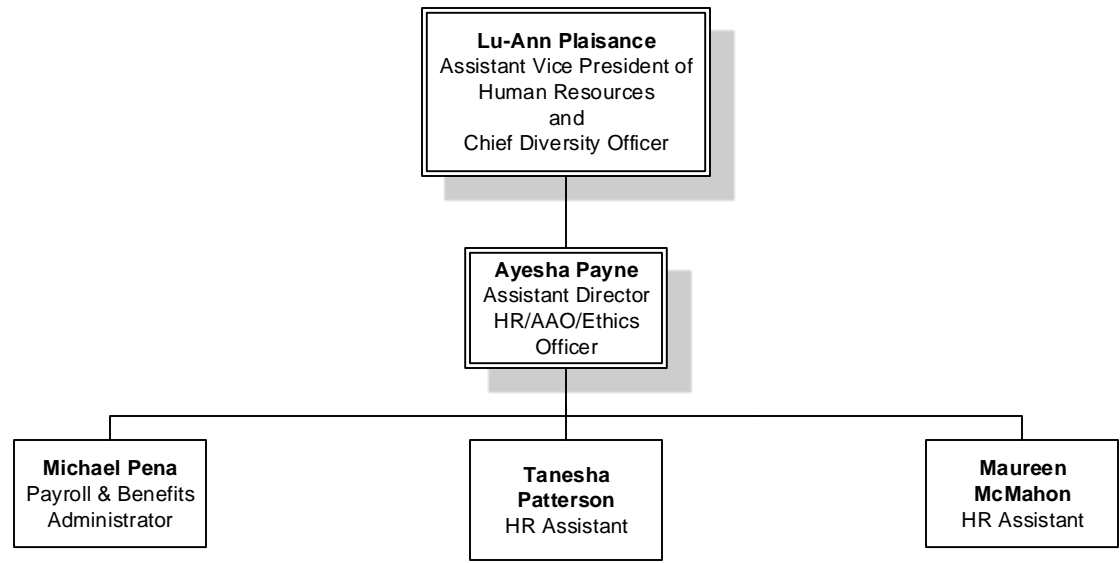


Housing and Residential Life



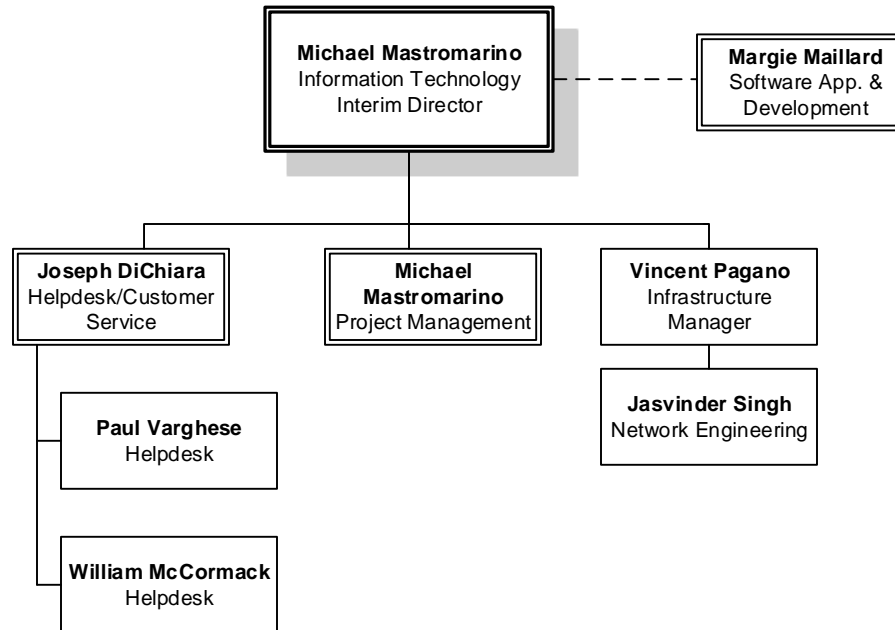


Human Resources Services

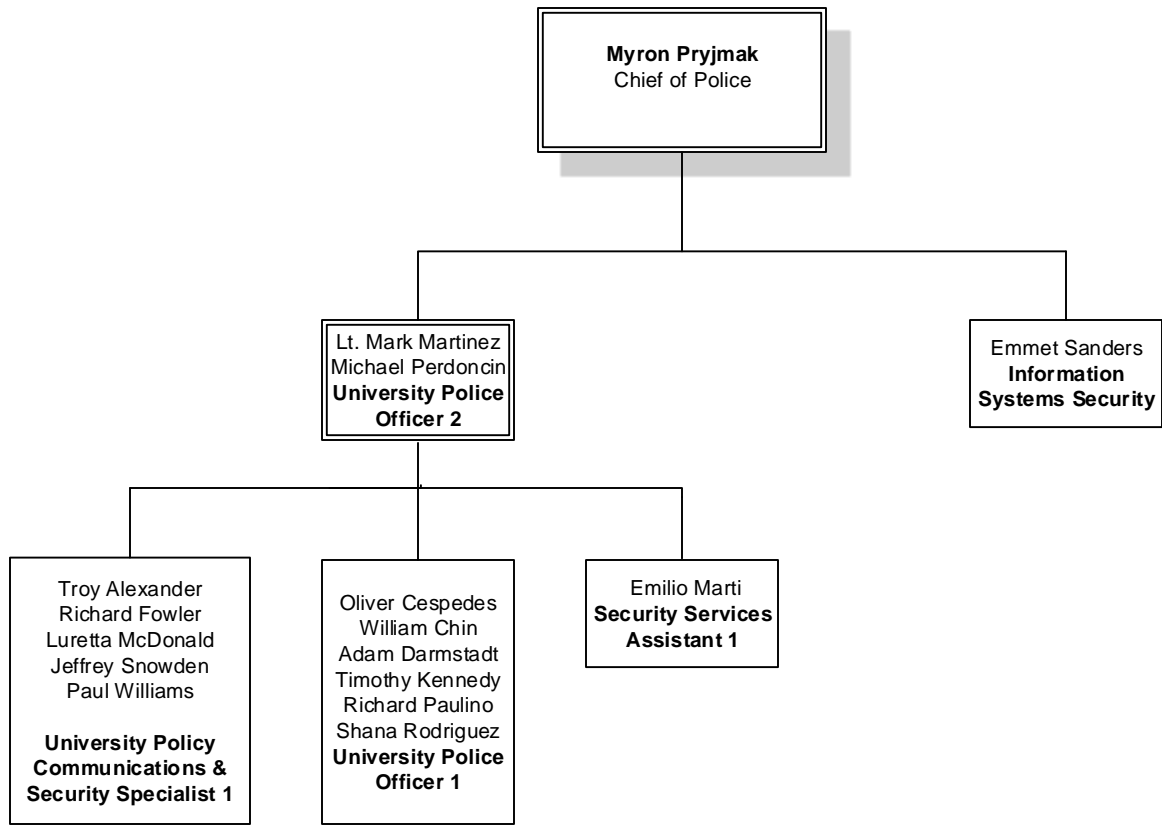




INFORMATION TECHNOLOGY

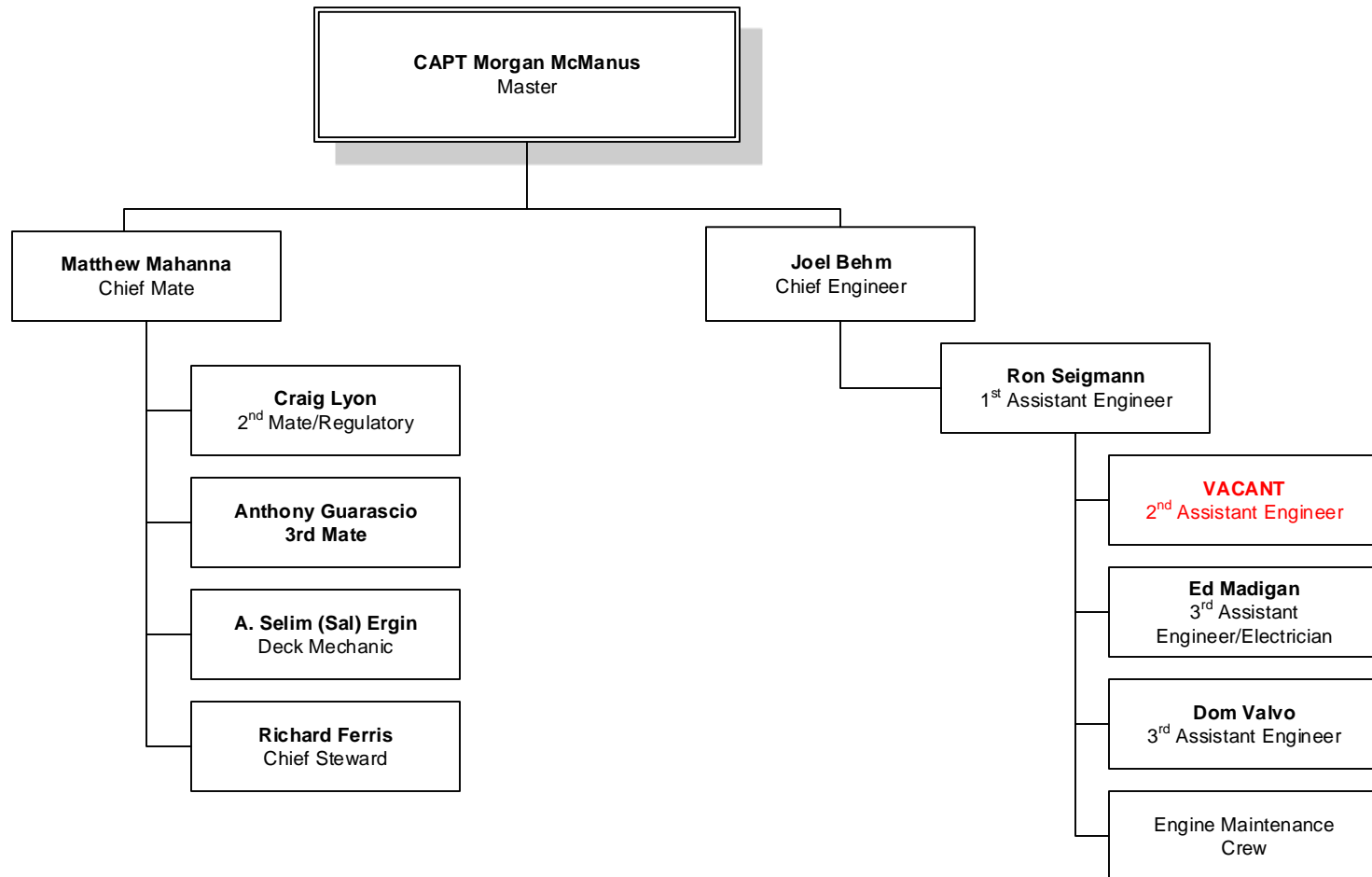


University Police





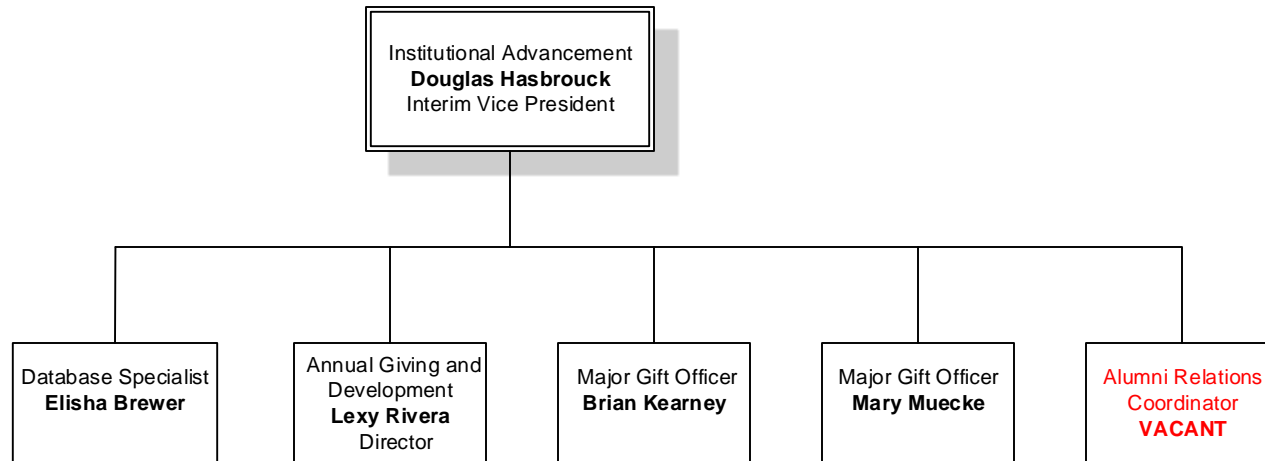
Empire State Training Ship VI



Cadets



INSTITUTIONAL ADVANCEMENT





Maritime College Foundation

