



# Organizational Chart

Spring 2024

Updated 02.07.24

# Contents

## Pg. Office/Department

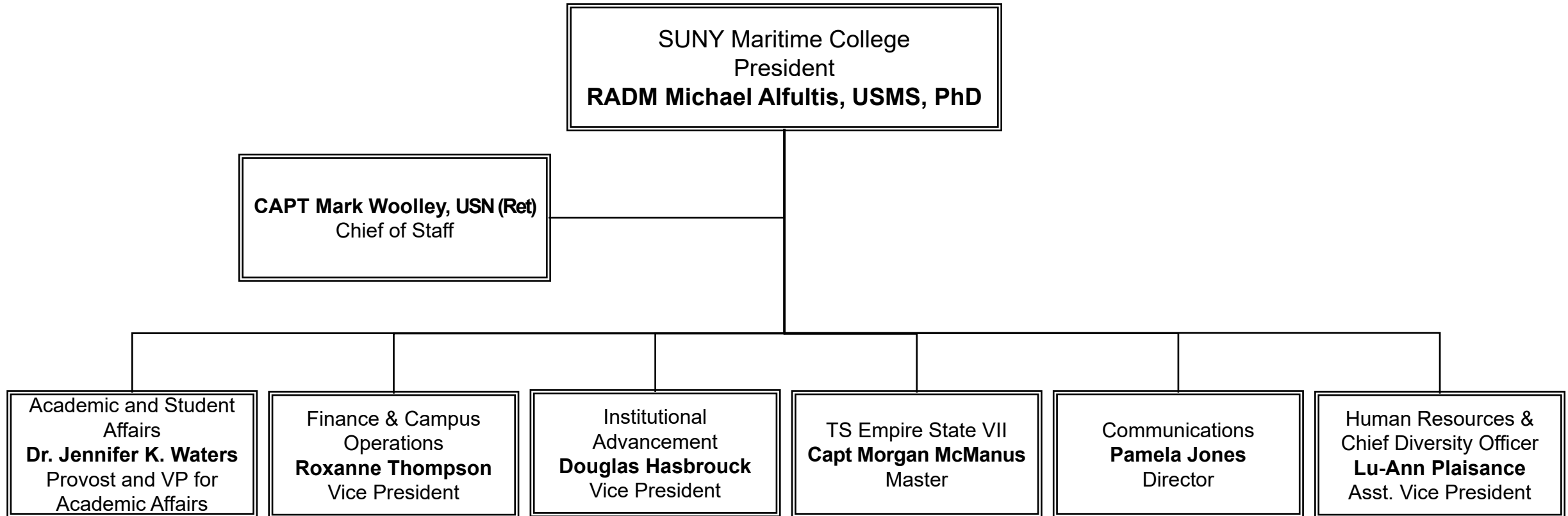
- 3. [Senior Leadership](#)
- 4. [Office of The President](#)
- 5. [Office of The Provost](#)
- 6. [Academic Affairs Leadership](#)
- 7. [Academic Services](#)
- 8. [School of Business, Science & Humanities](#)
- 9. [Department of Global Business & Transportation](#)
- 10. [Department of Humanities](#)
- 11. [Department of Science](#)
- 12. [School of Engineering](#)
- 13. [Department of Electrical Engineering](#)
- 14. [Department of Mechanical and Facilities Engineering](#)
- 15. [Department of Naval Architecture and Marine Engineering](#)
- 16. [School of Maritime Education and Training](#)
- 17. [Department of Marine Transportation](#)
- 18. [Department of Maritime Technology and Operations](#)
- 19. [Department of Naval Science & NROTC](#)

## Pg. Office/Department

- 20. [Library](#)
- 21. [Admissions](#)
- 22. [Regiment of Cadets](#)
- 23. [Student Affairs](#)
- 24. [Housing and Residential Life](#)
- 25. [Athletics](#)
- 26. [Office of Finance and Campus Operations](#)
- 27. [Financial Services](#)
- 28. [Financial Aid](#)
- 29. [Waterfront](#)
- 30. [Physical Plant / Facilities](#)
- 31. [Information Technology](#)
- 32. [Human Resource Services](#)
- 33. [University Police](#)
- 34. [Training Ship Empire State Vi](#)
- 35. [Institutional Advancement](#)

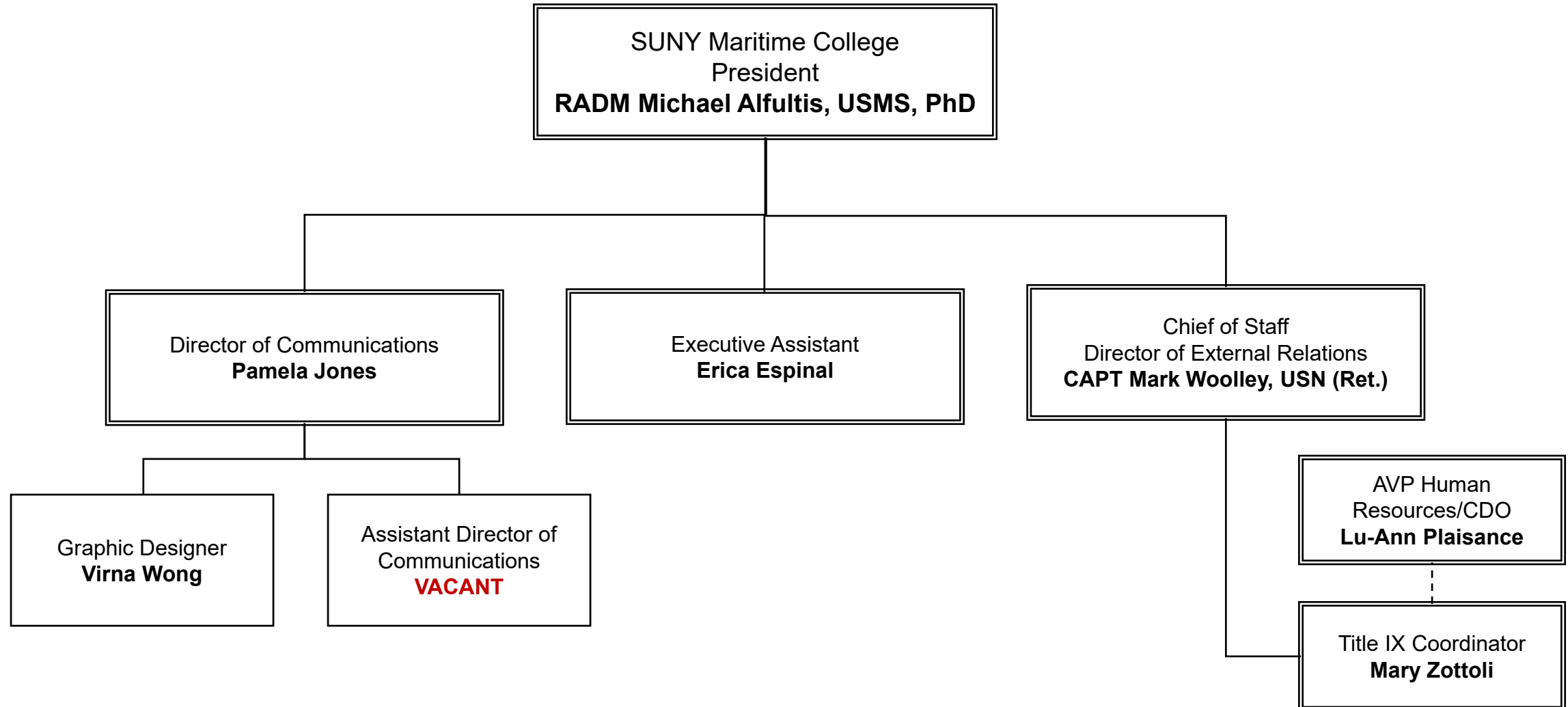


## SENIOR LEADERSHIP

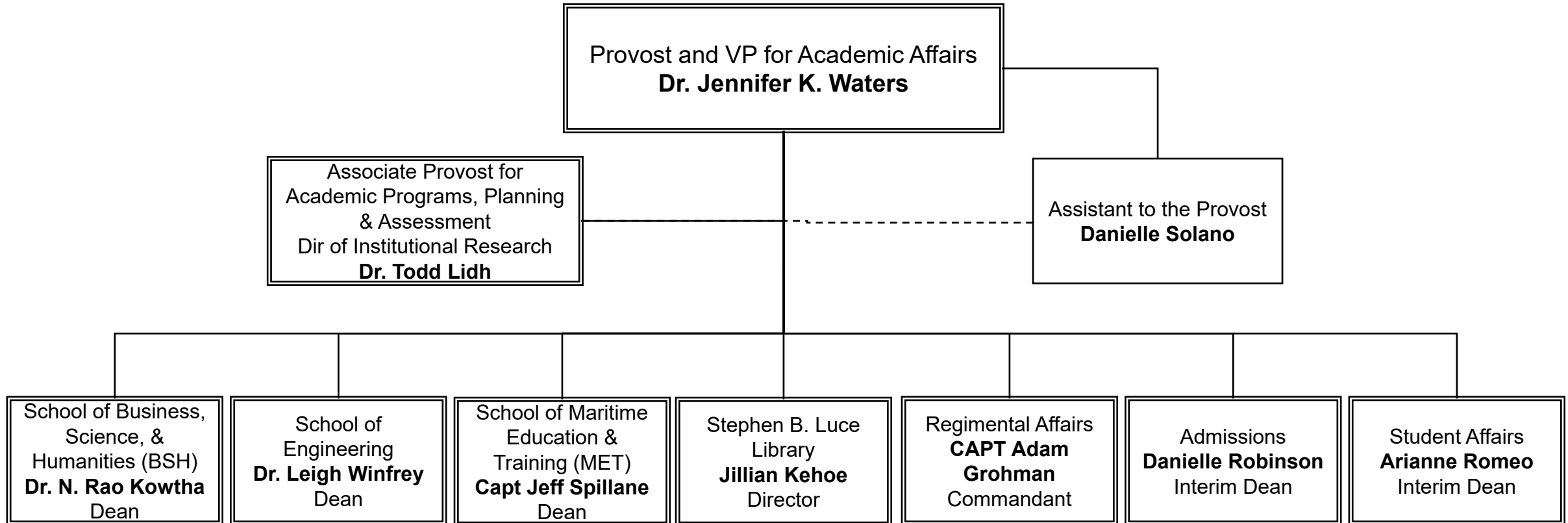




## OFFICE OF THE PRESIDENT



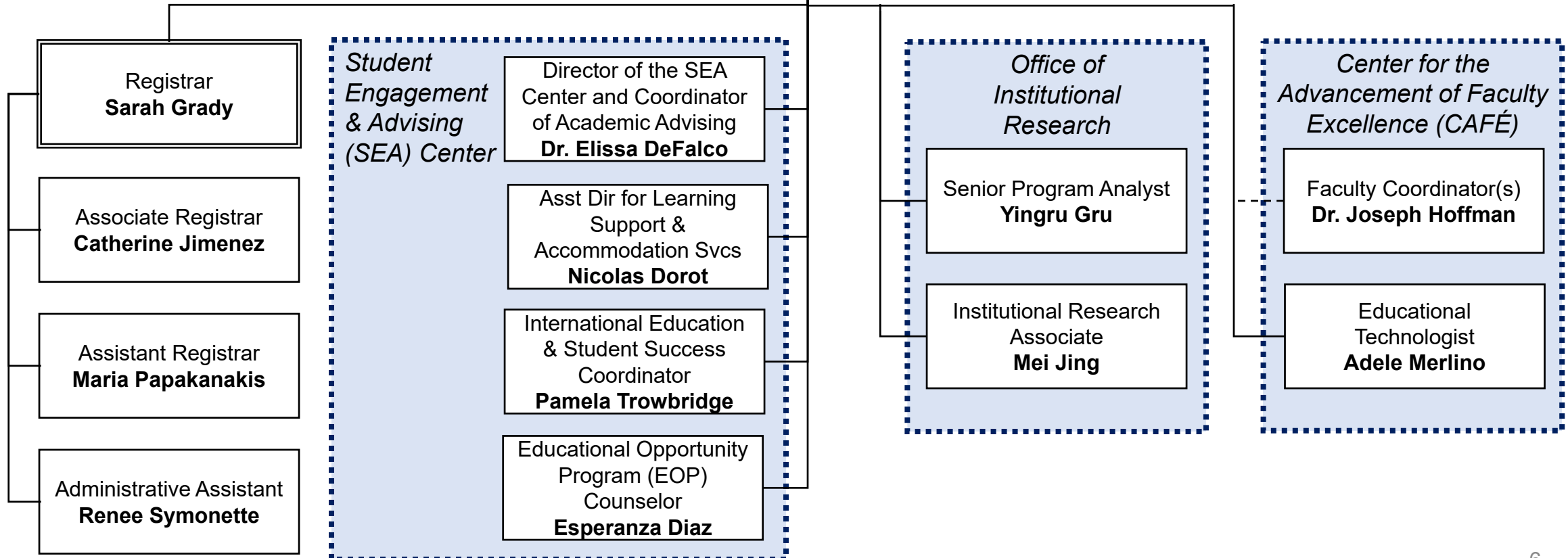
## OFFICE OF THE PROVOST



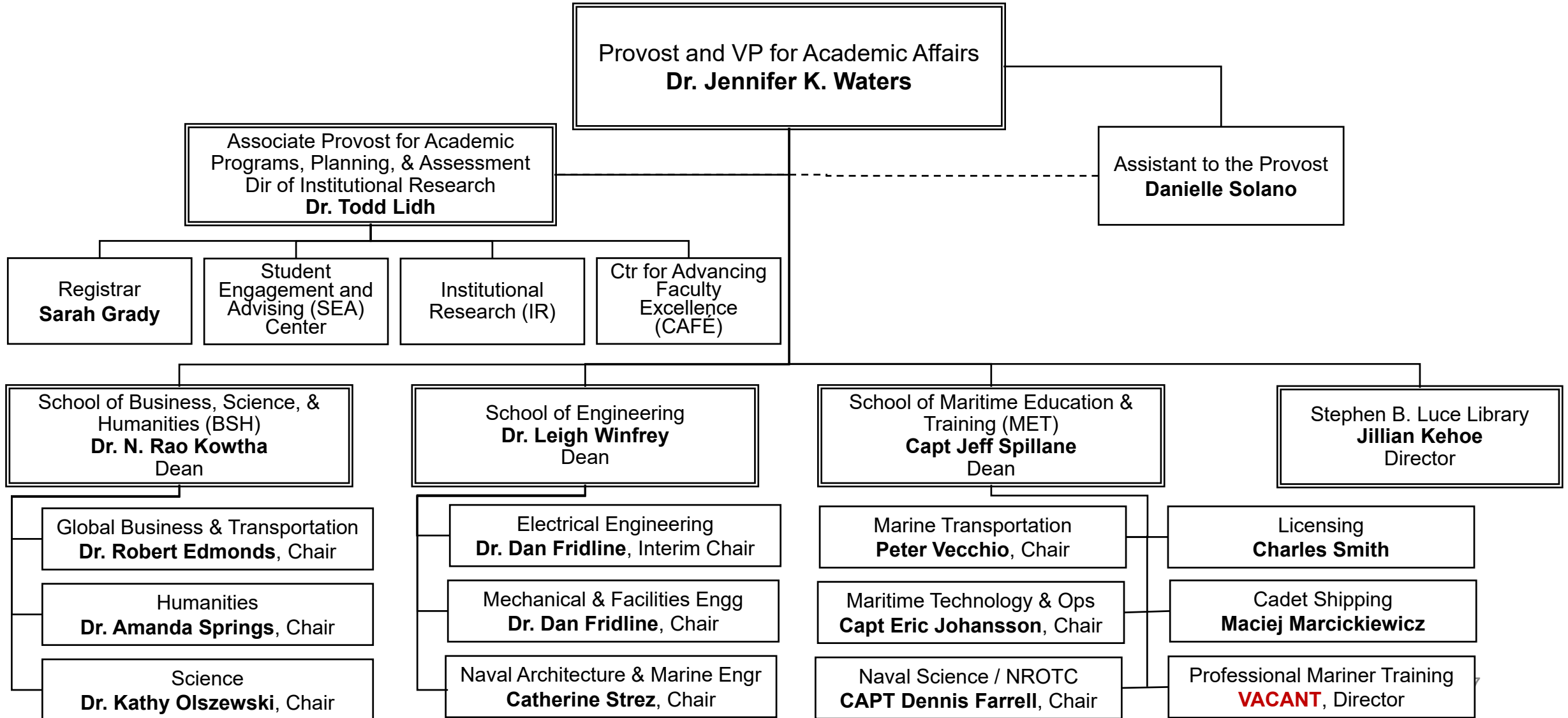
## ACADEMIC SERVICES

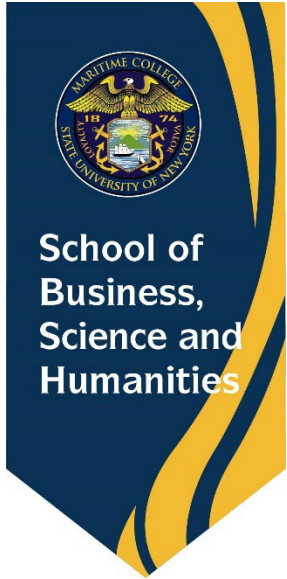
Associate Provost for Academic Programs, Planning, & Assessment  
Director of Institutional Research  
Director of EOP Program  
**Dr. Todd Lidh**

Administrative Support:  
Assistant to the Provost  
**Danielle Solano**

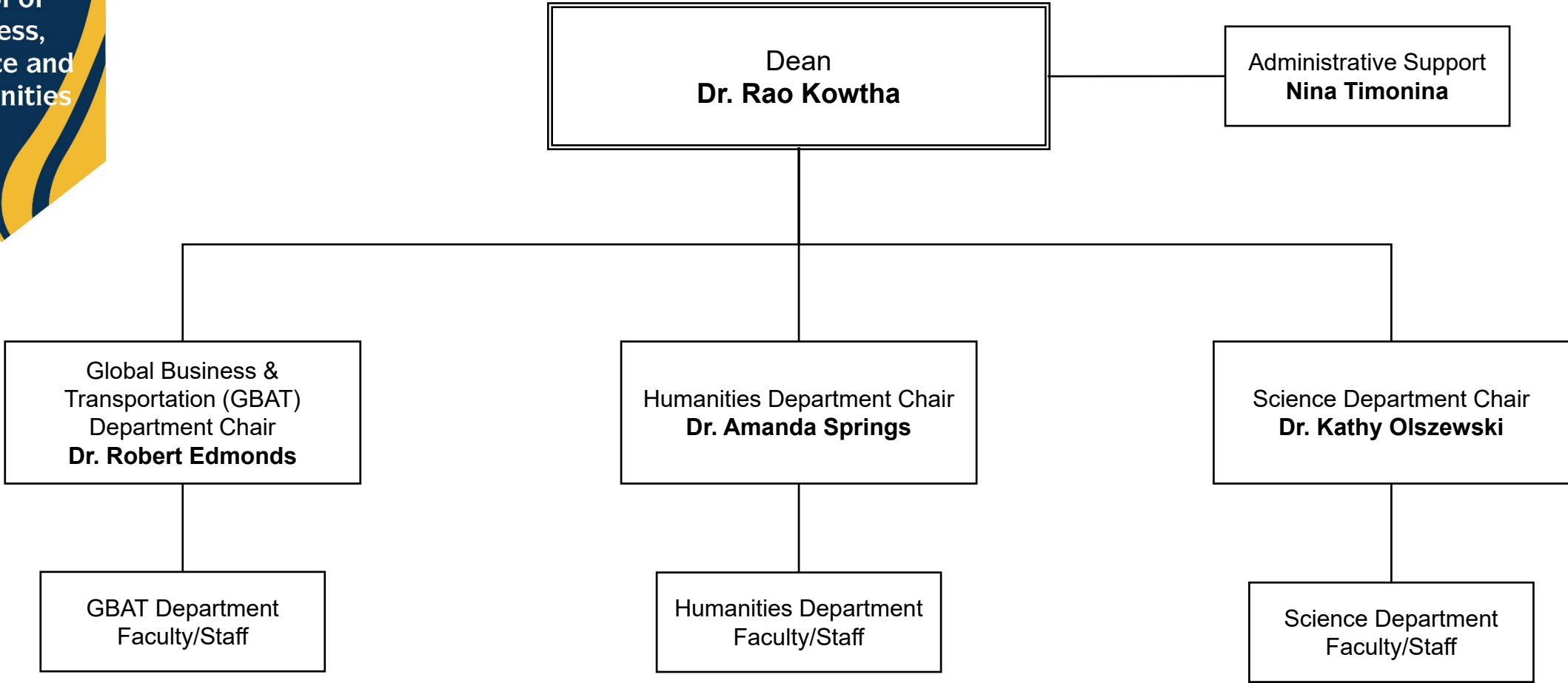


## ACADEMIC AFFAIRS LEADERSHIP

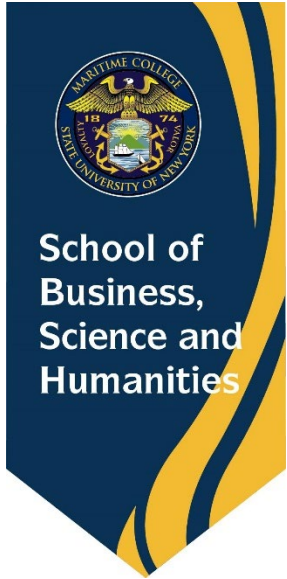




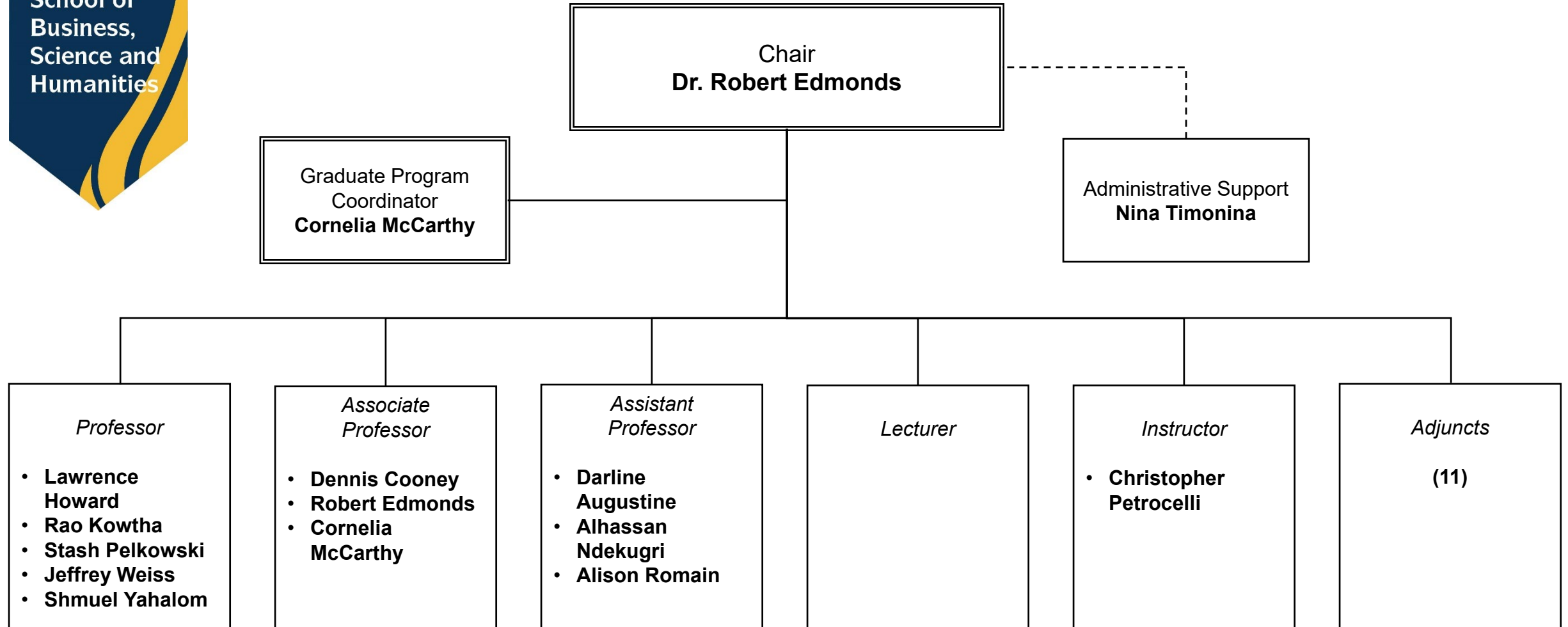
**SCHOOL OF BUSINESS, SCIENCE & HUMANITIES (BHS)**

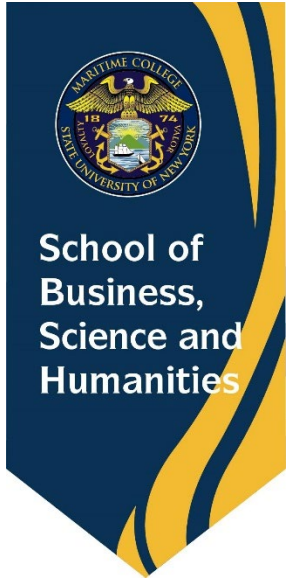




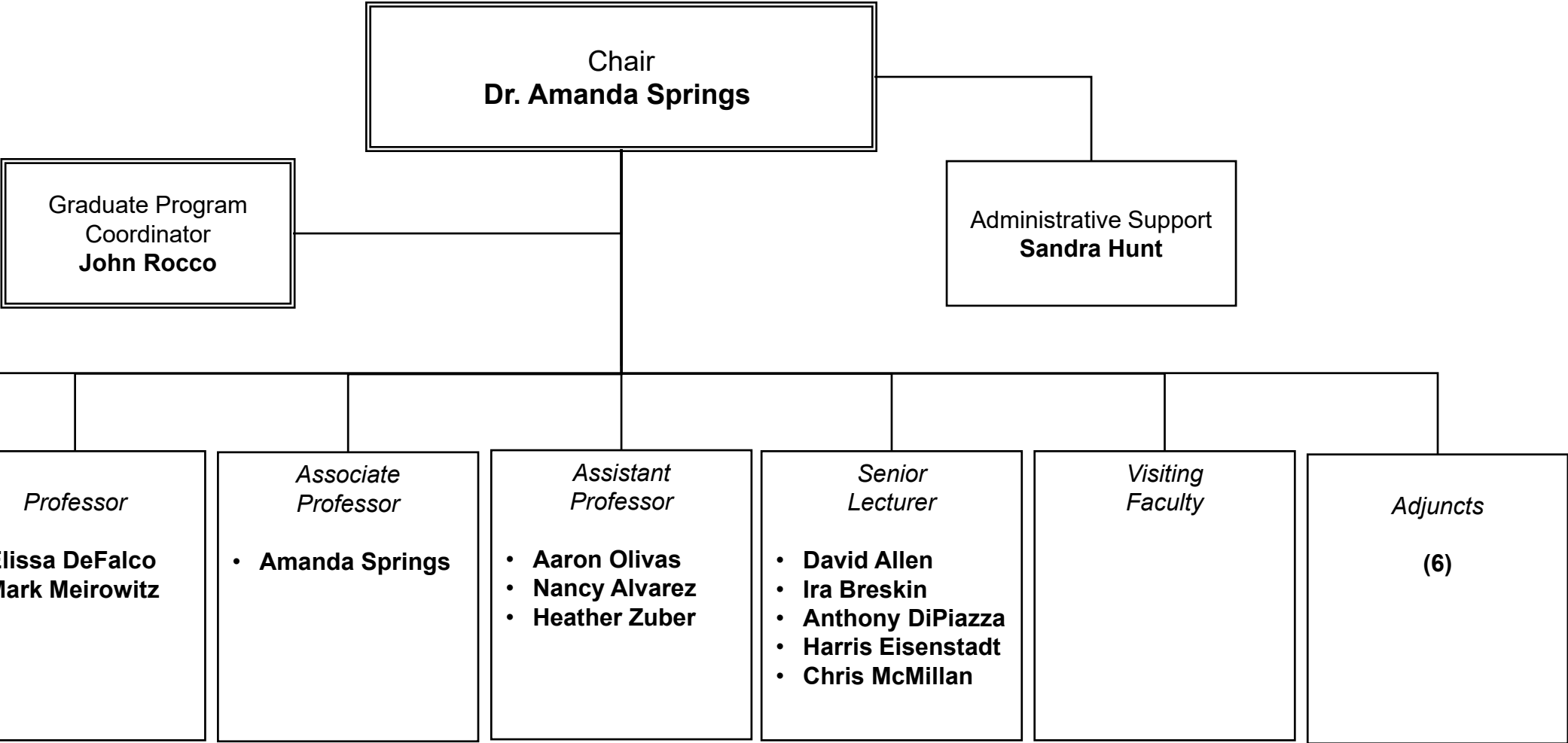


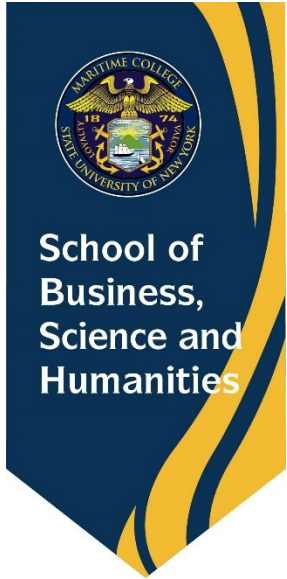
## DEPARTMENT OF GLOBAL BUSINESS & TRANSPORTATION (GBAT)



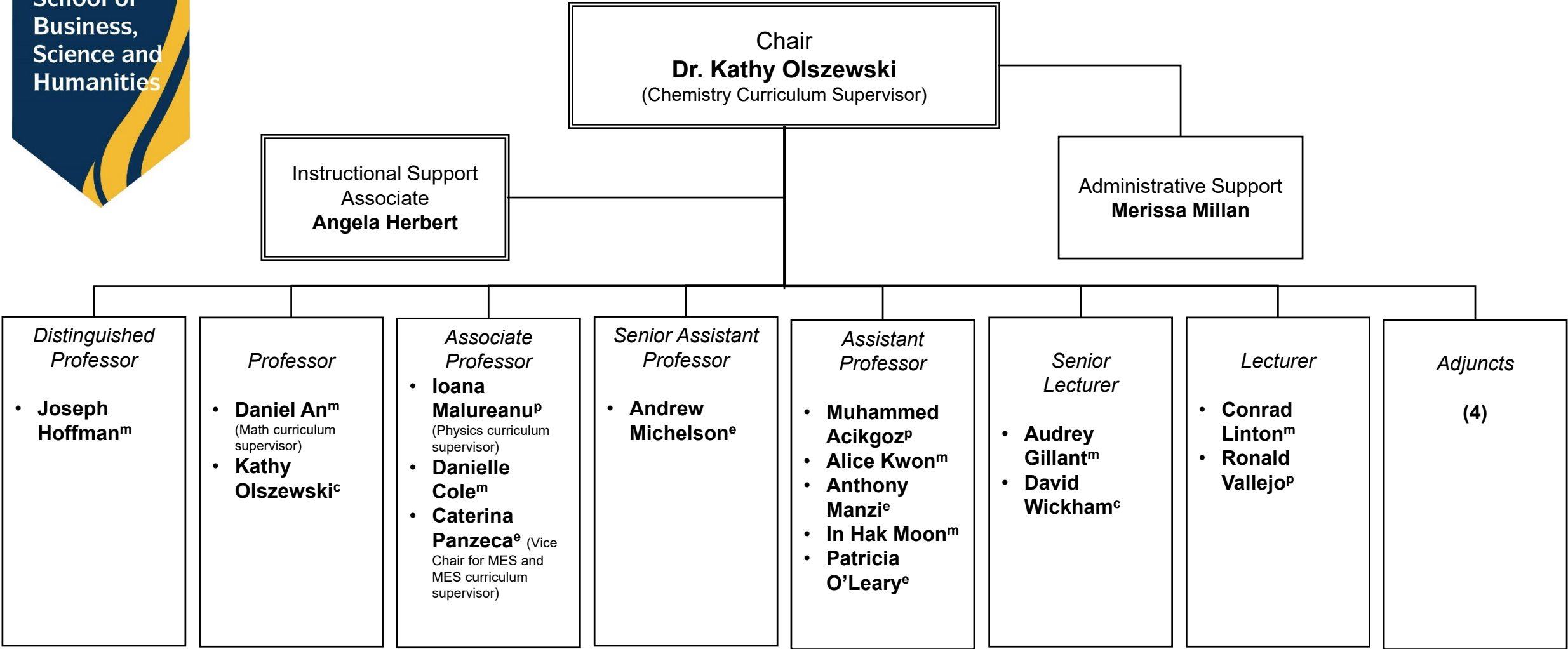


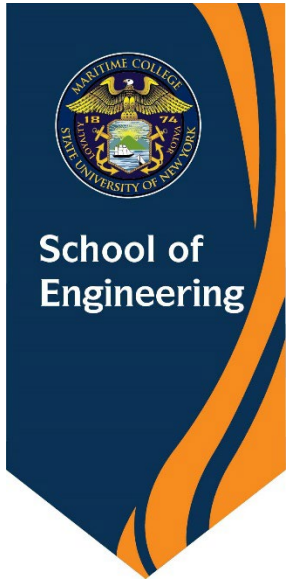
**DEPARTMENT OF HUMANITIES**



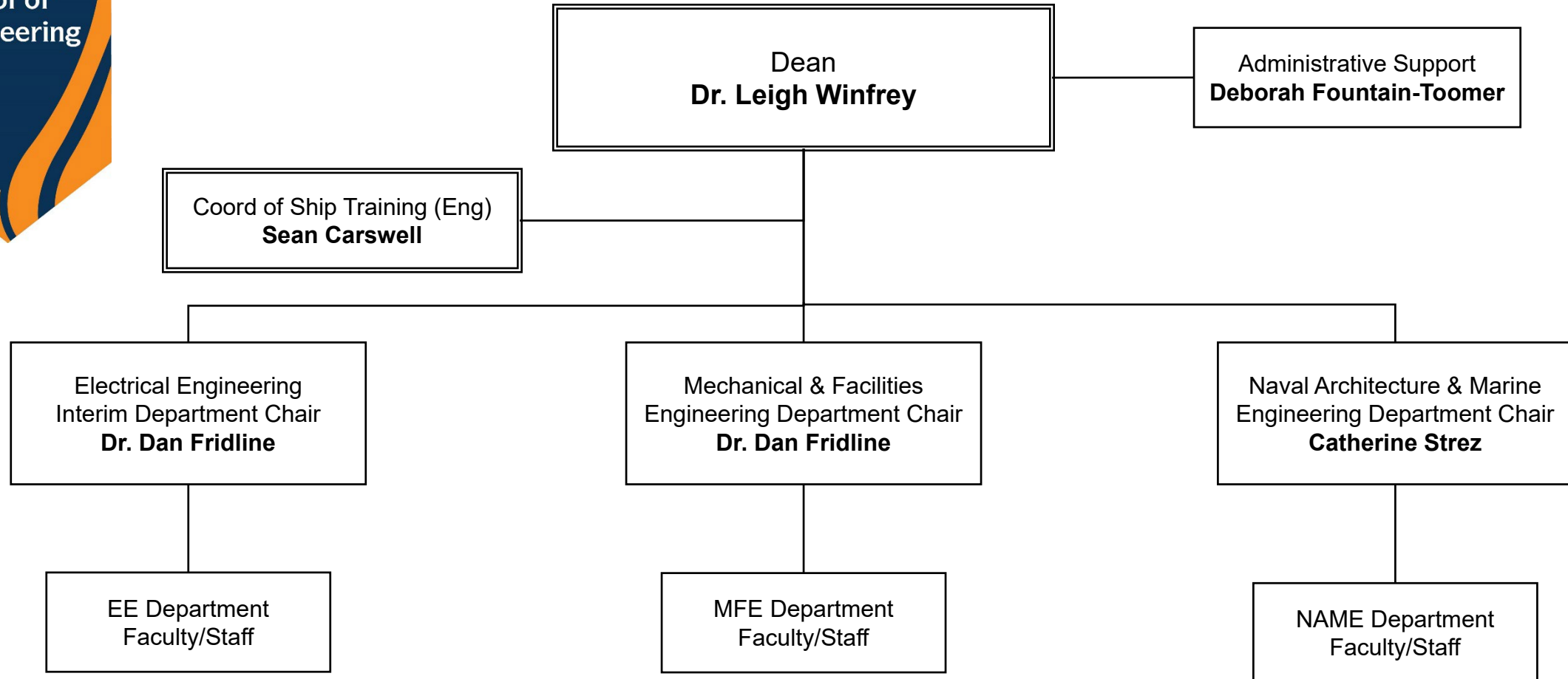


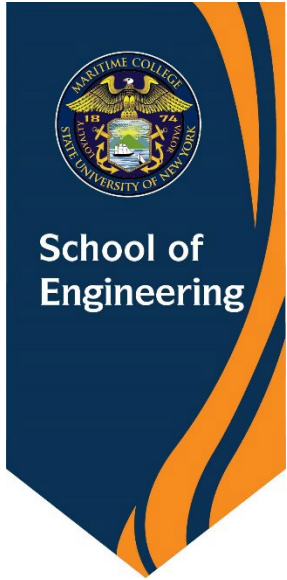
DEPARTMENT OF SCIENCE



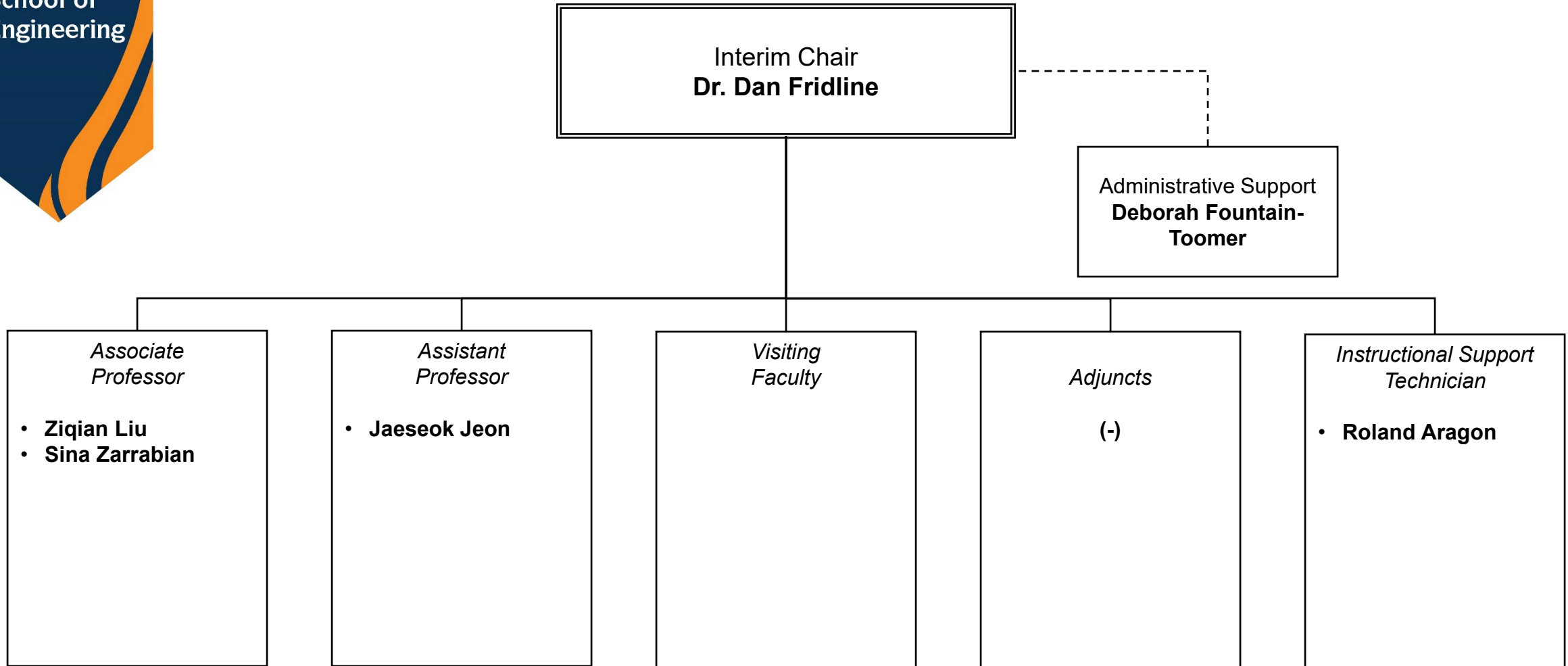


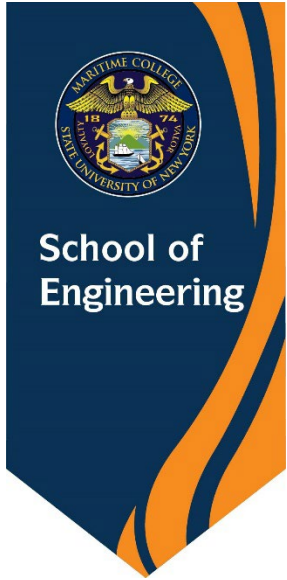
## SCHOOL OF ENGINEERING



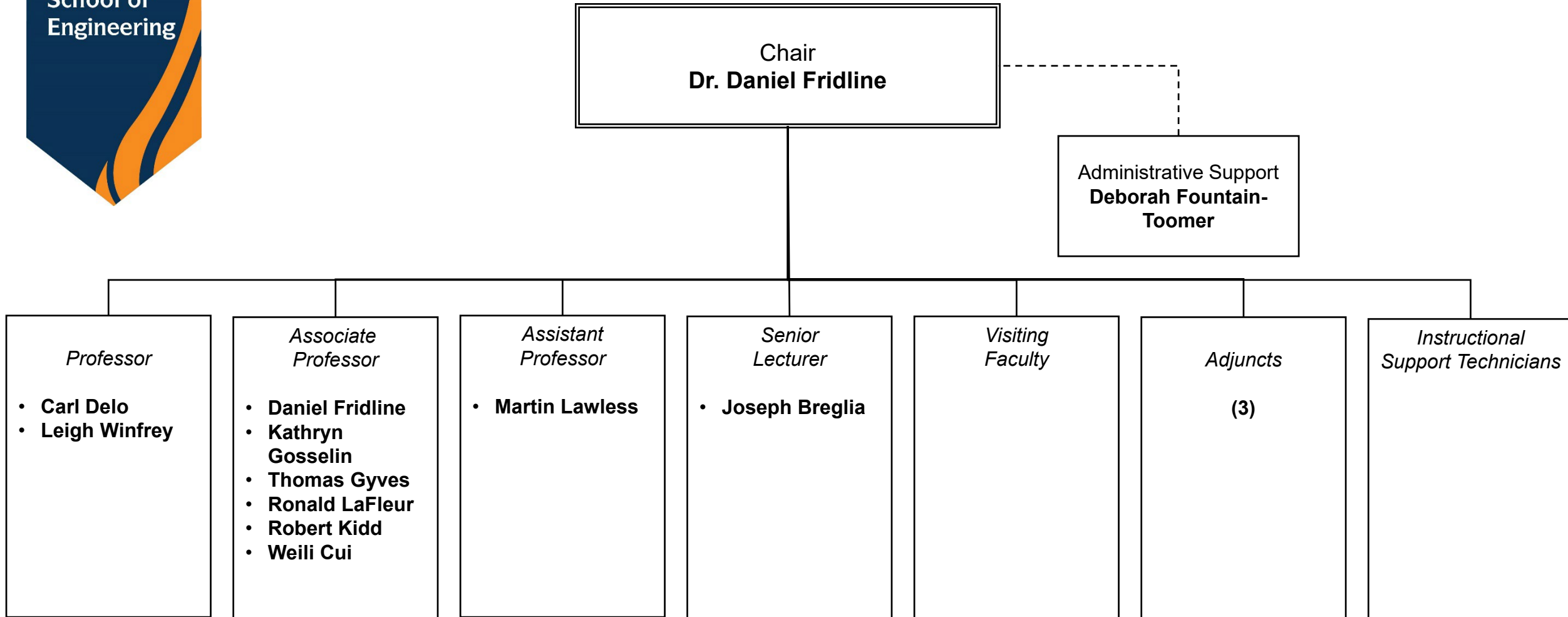


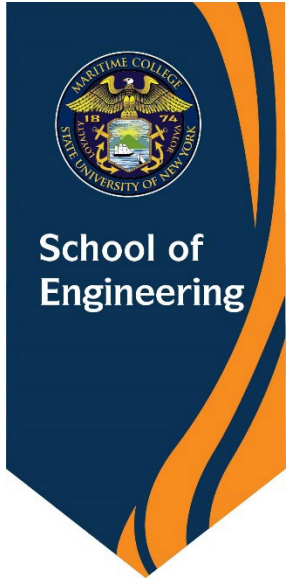
## DEPARTMENT OF ELECTRICAL ENGINEERING (EE)



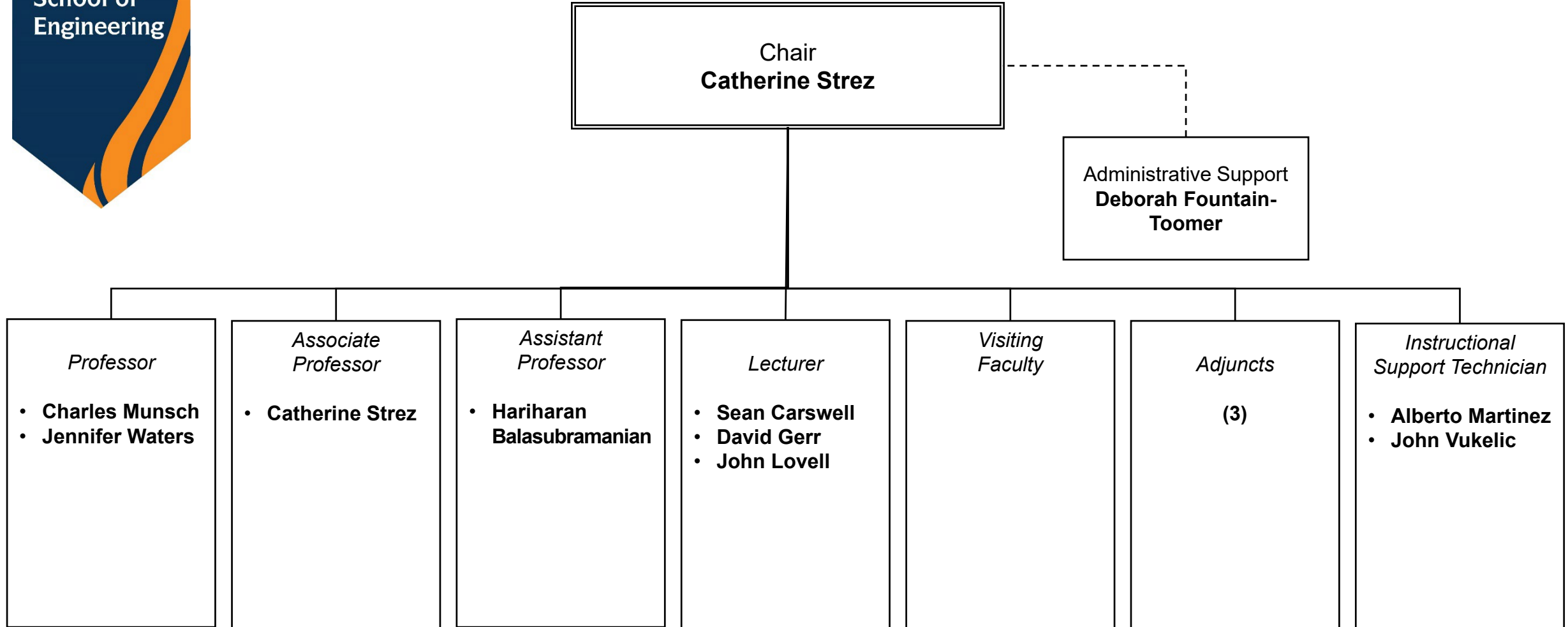


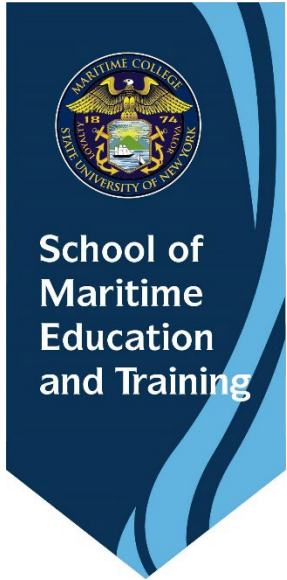
## DEPARTMENT OF MECHANICAL AND FACILITIES ENGINEERING (MFE)



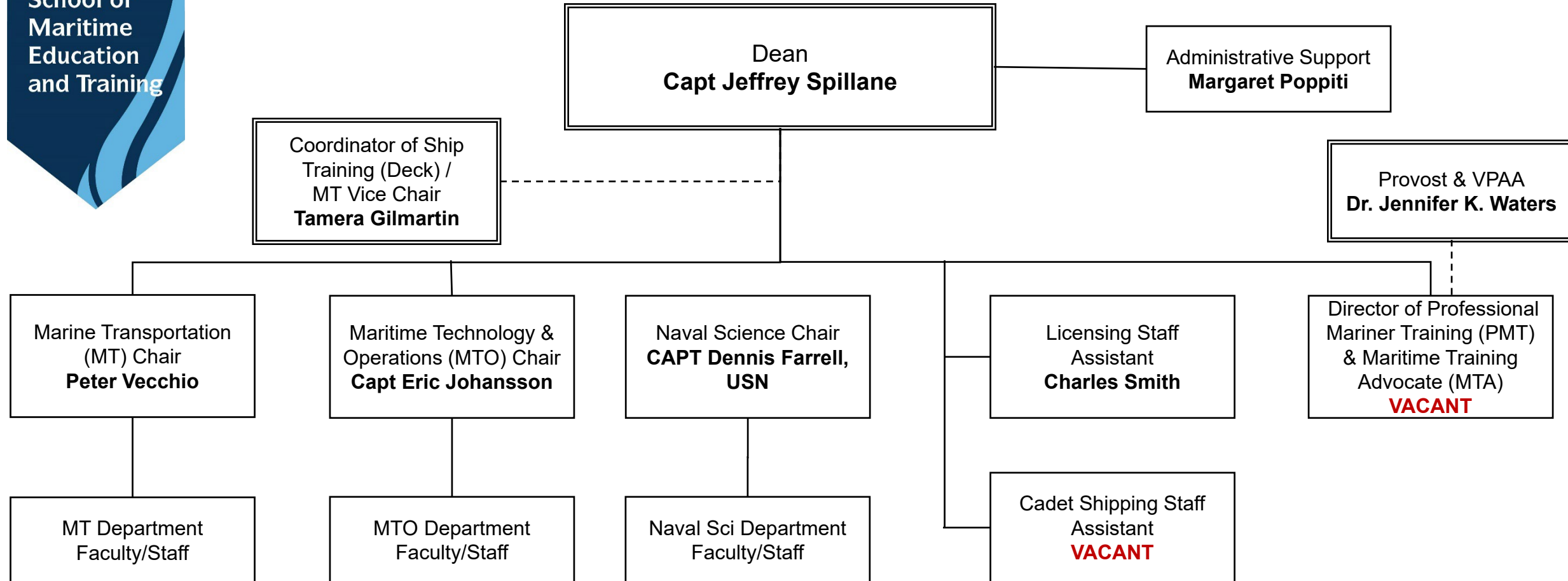


## DEPARTMENT OF NAVAL ARCHITECTURE AND MARINE ENGINEERING (NAME)

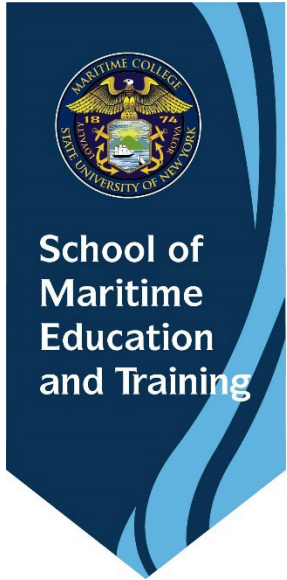




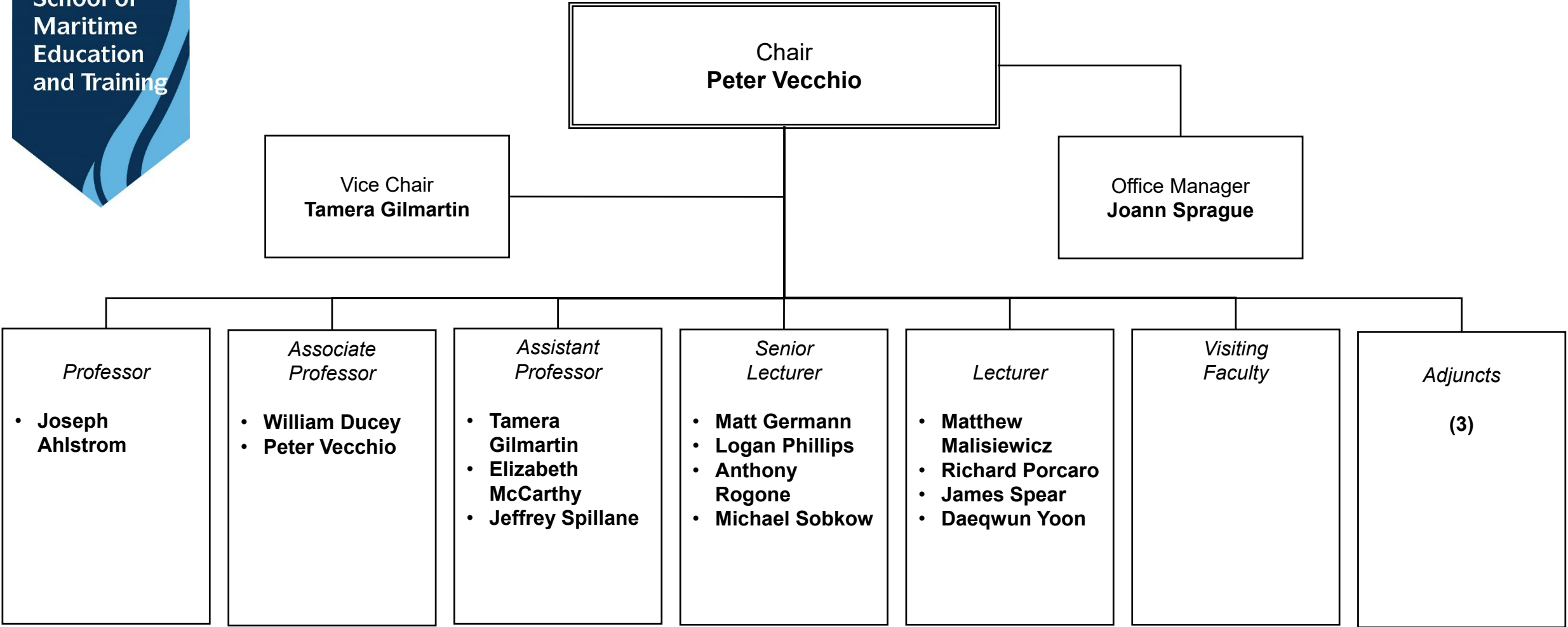
## SCHOOL OF MARITIME EDUCATION AND TRAINING (MET)

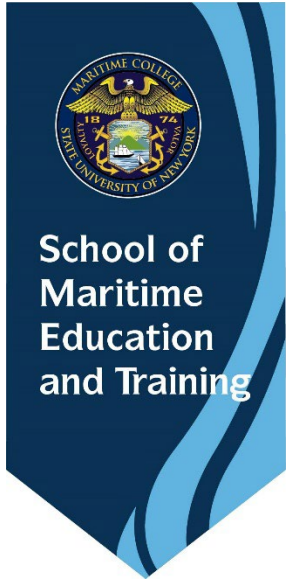




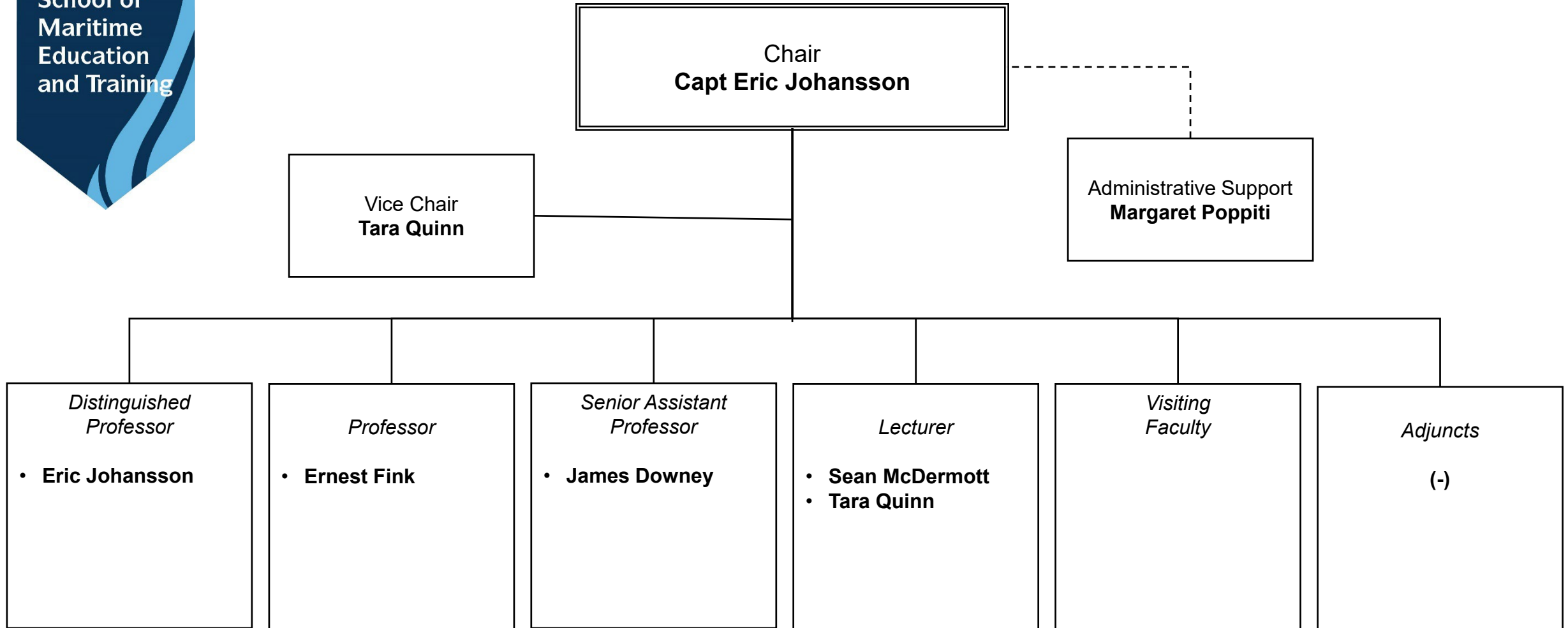


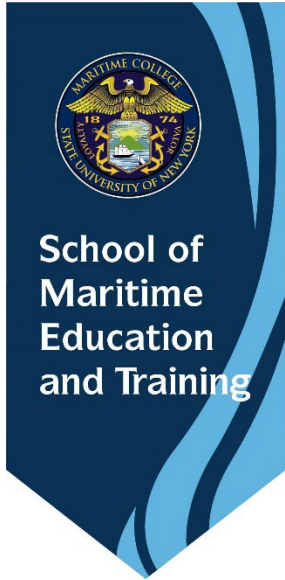
**DEPARTMENT OF MARINE TRANSPORTATION (MT)**



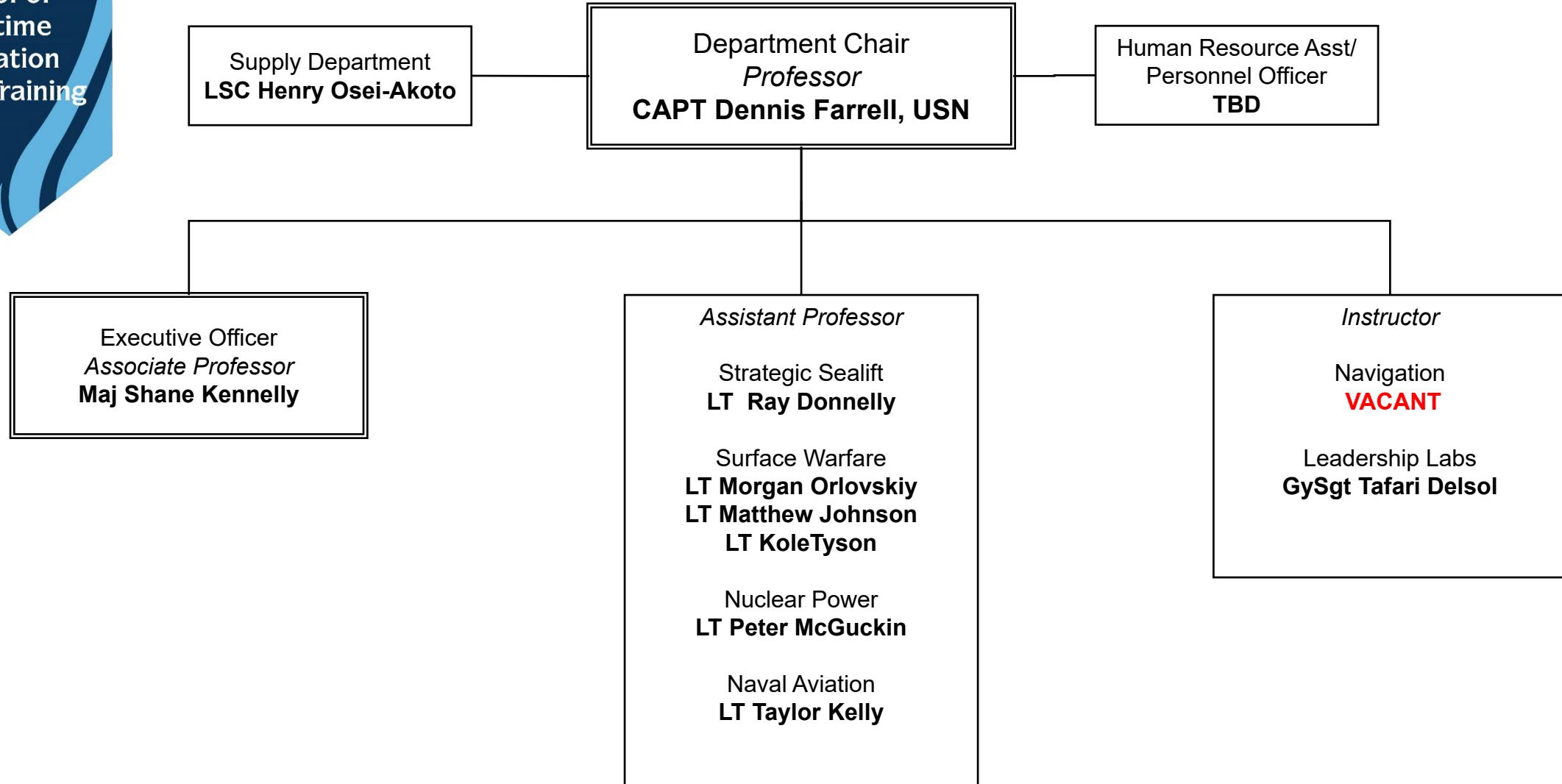


## DEPARTMENT OF MARITIME TECHNOLOGY AND OPERATIONS (MTO)



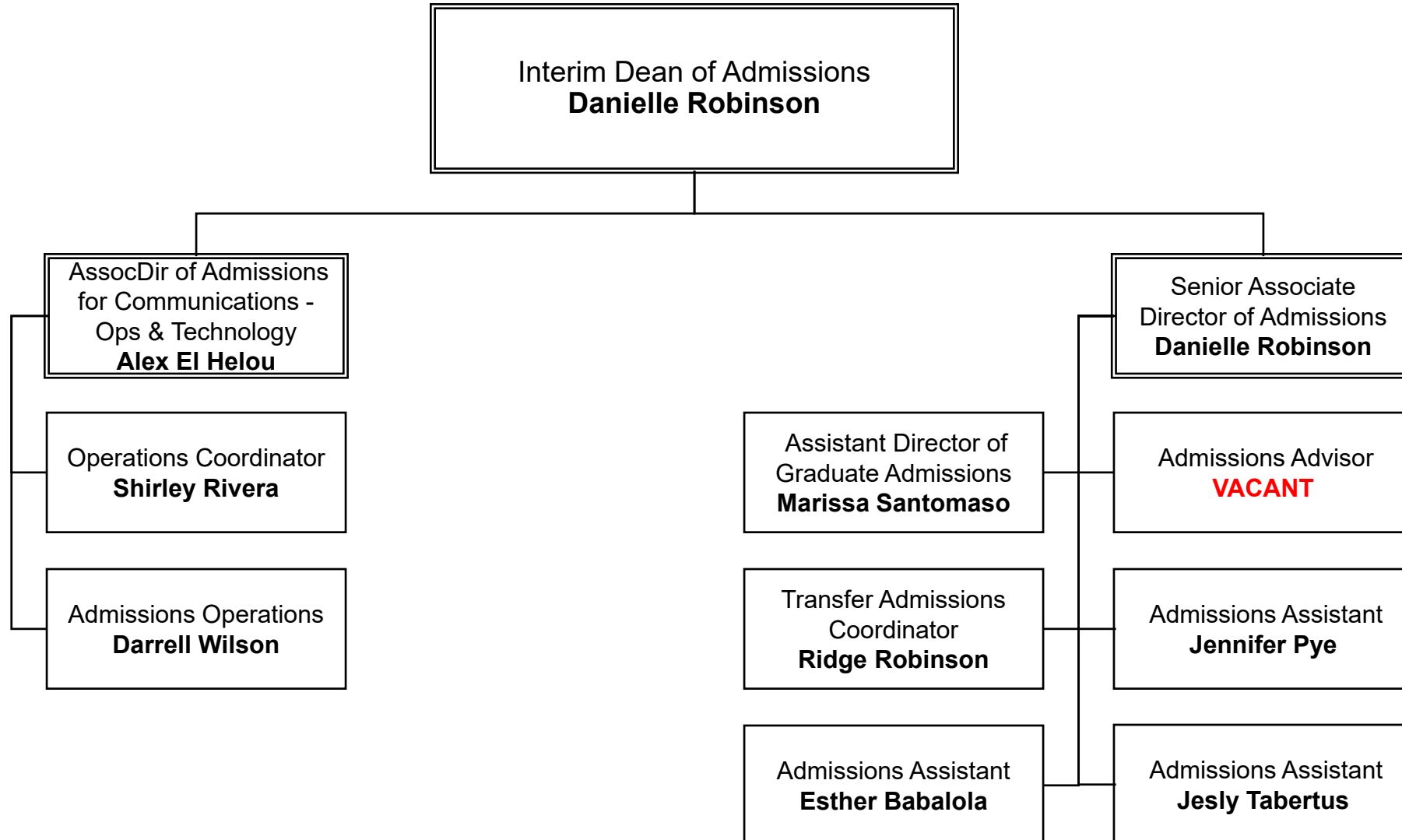


## DEPARTMENT OF NAVAL SCIENCE & NROTC

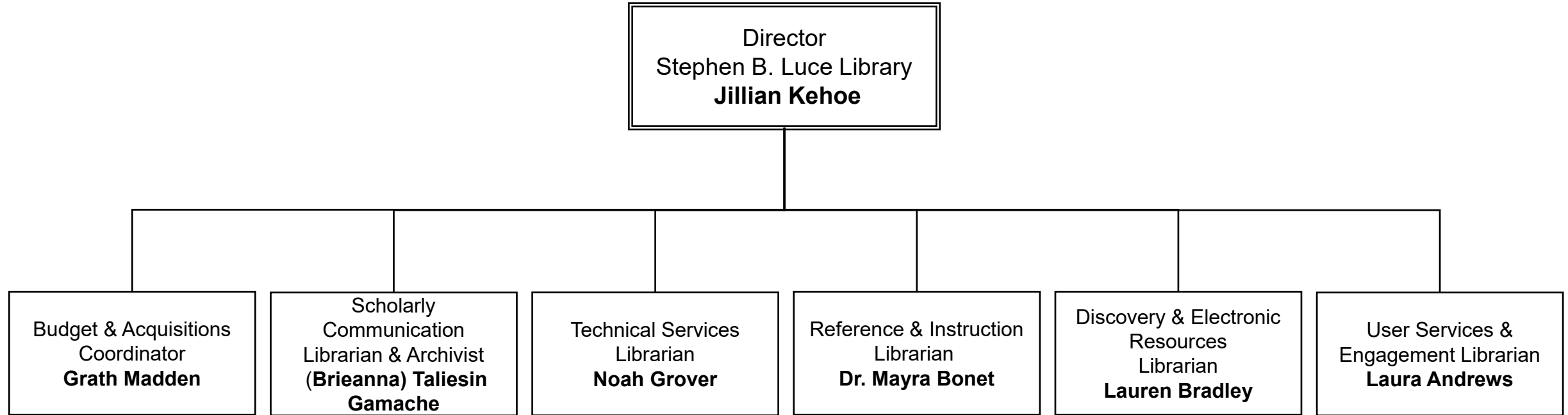




## ADMISSIONS

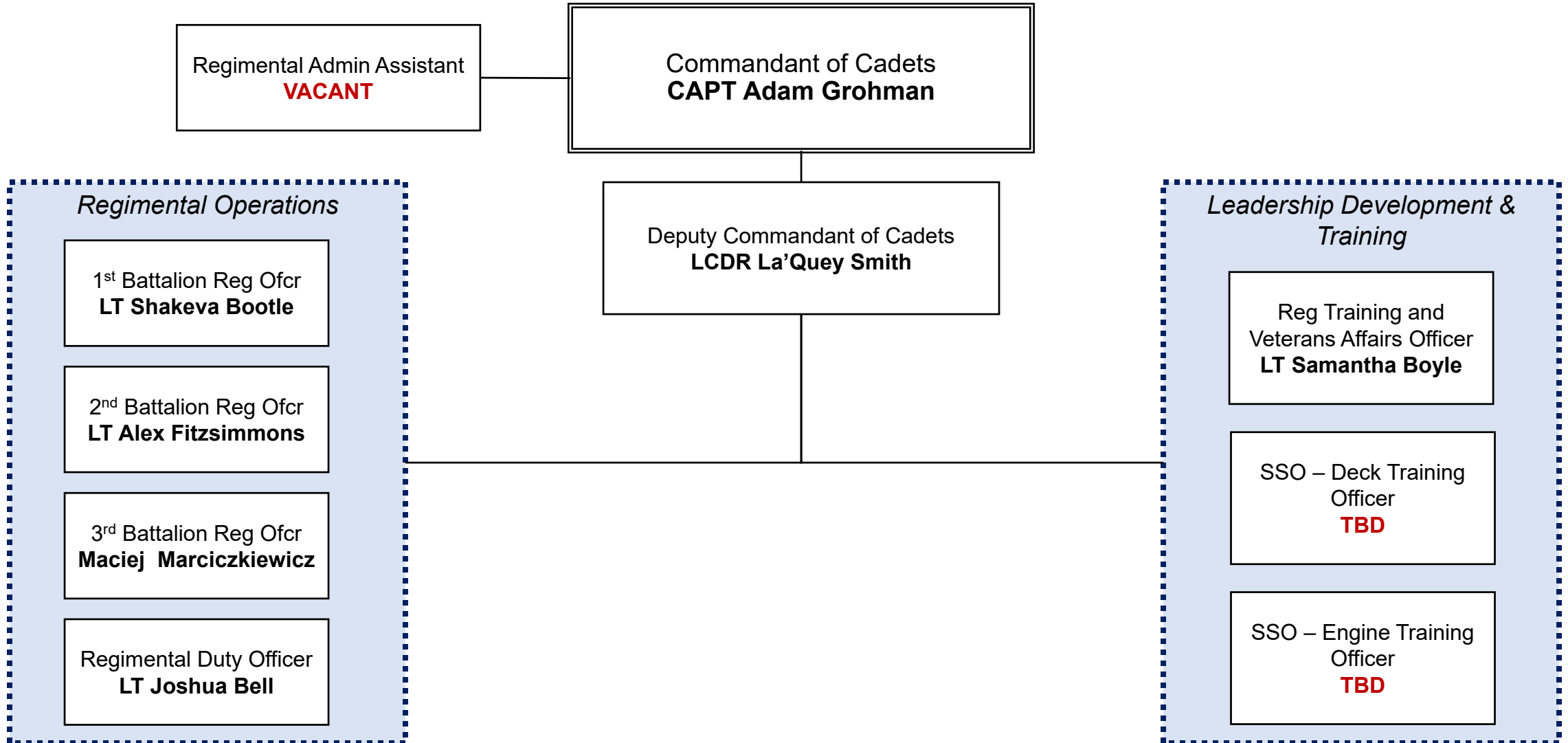


## LIBRARY

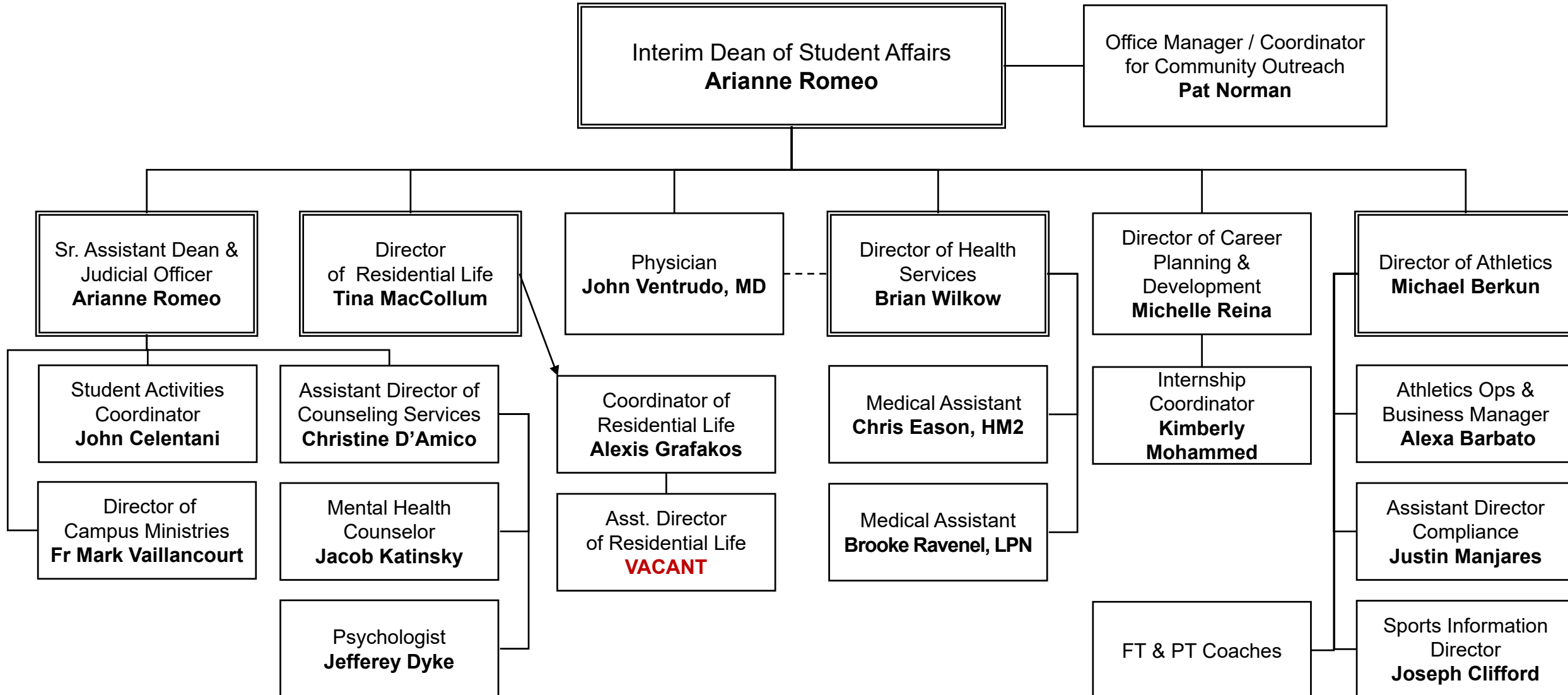




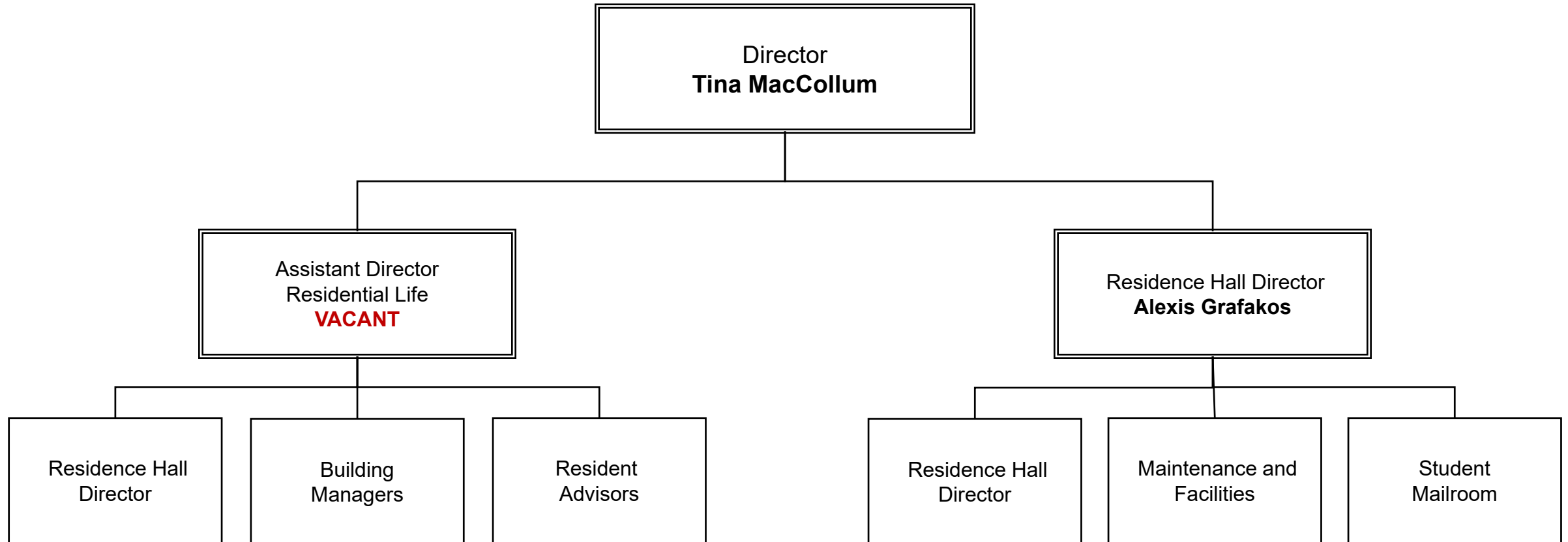
## REGIMENT OF CADETS



## STUDENT AFFAIRS



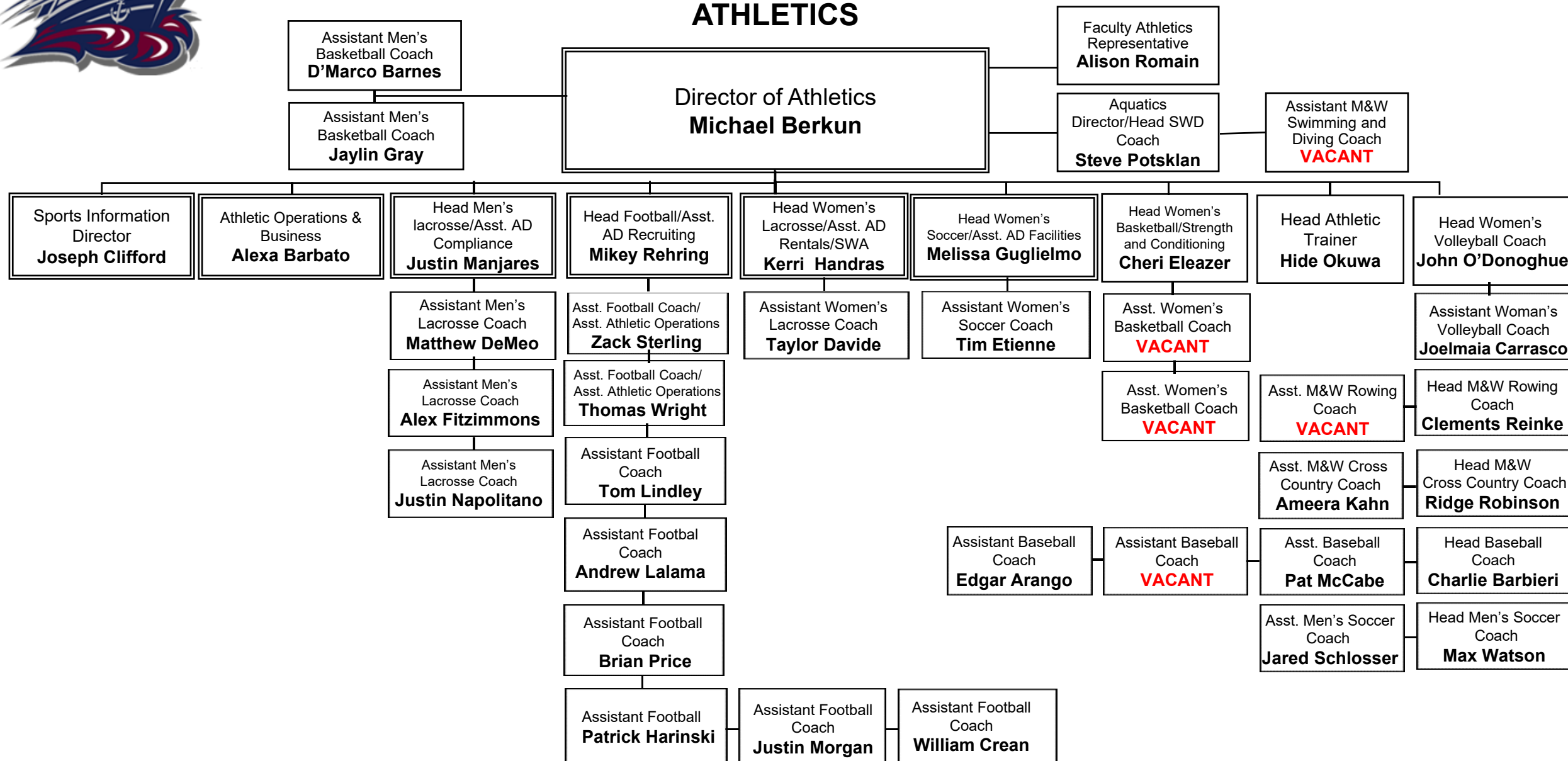
## RESIDENTIAL LIFE



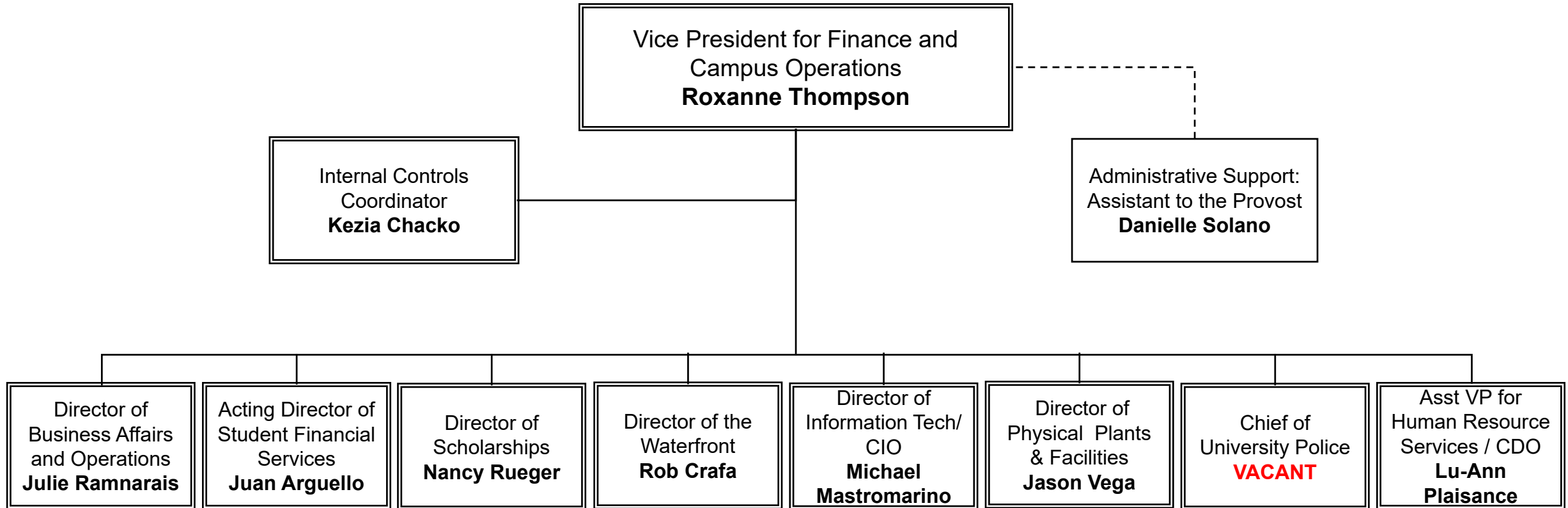




## ATHLETICS

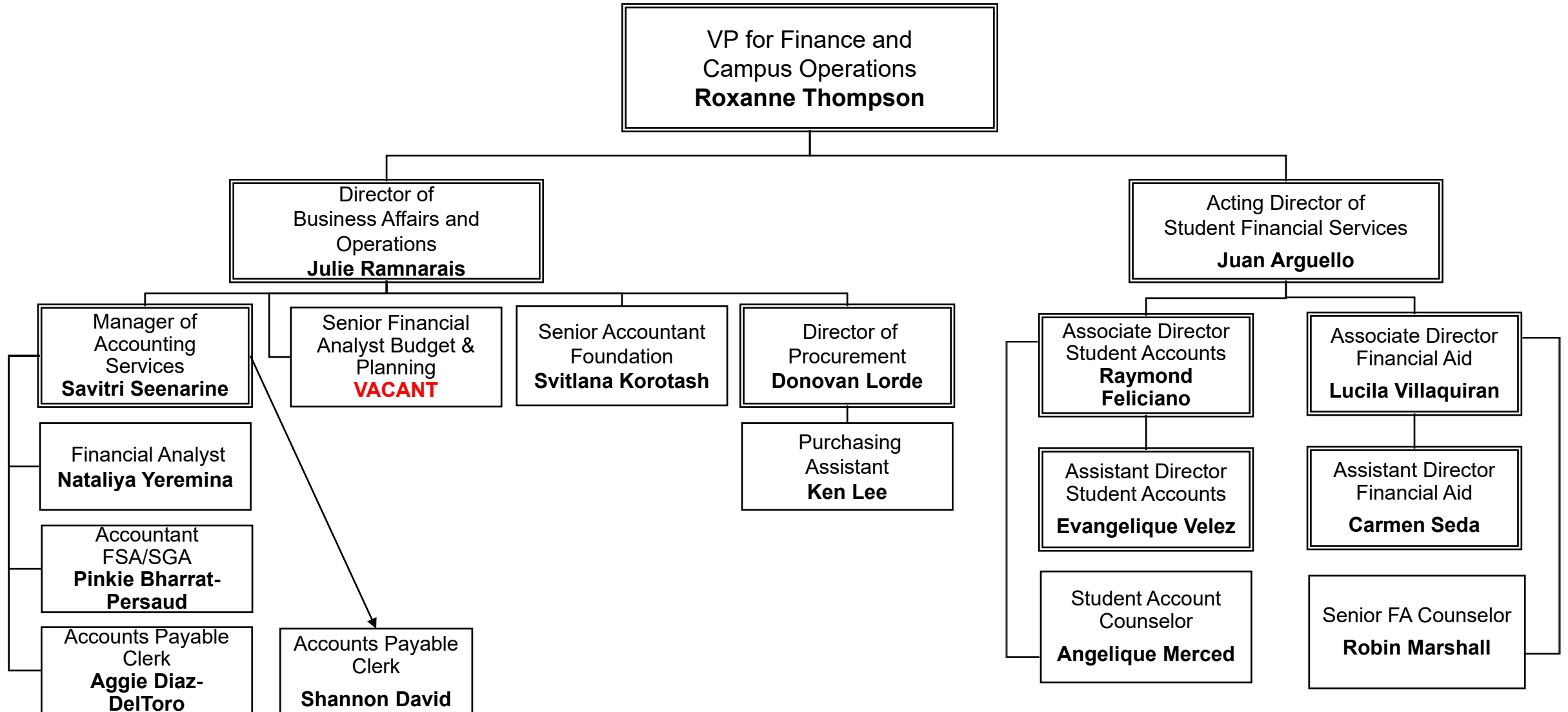


## OFFICE OF FINANCE AND CAMPUS OPERATIONS



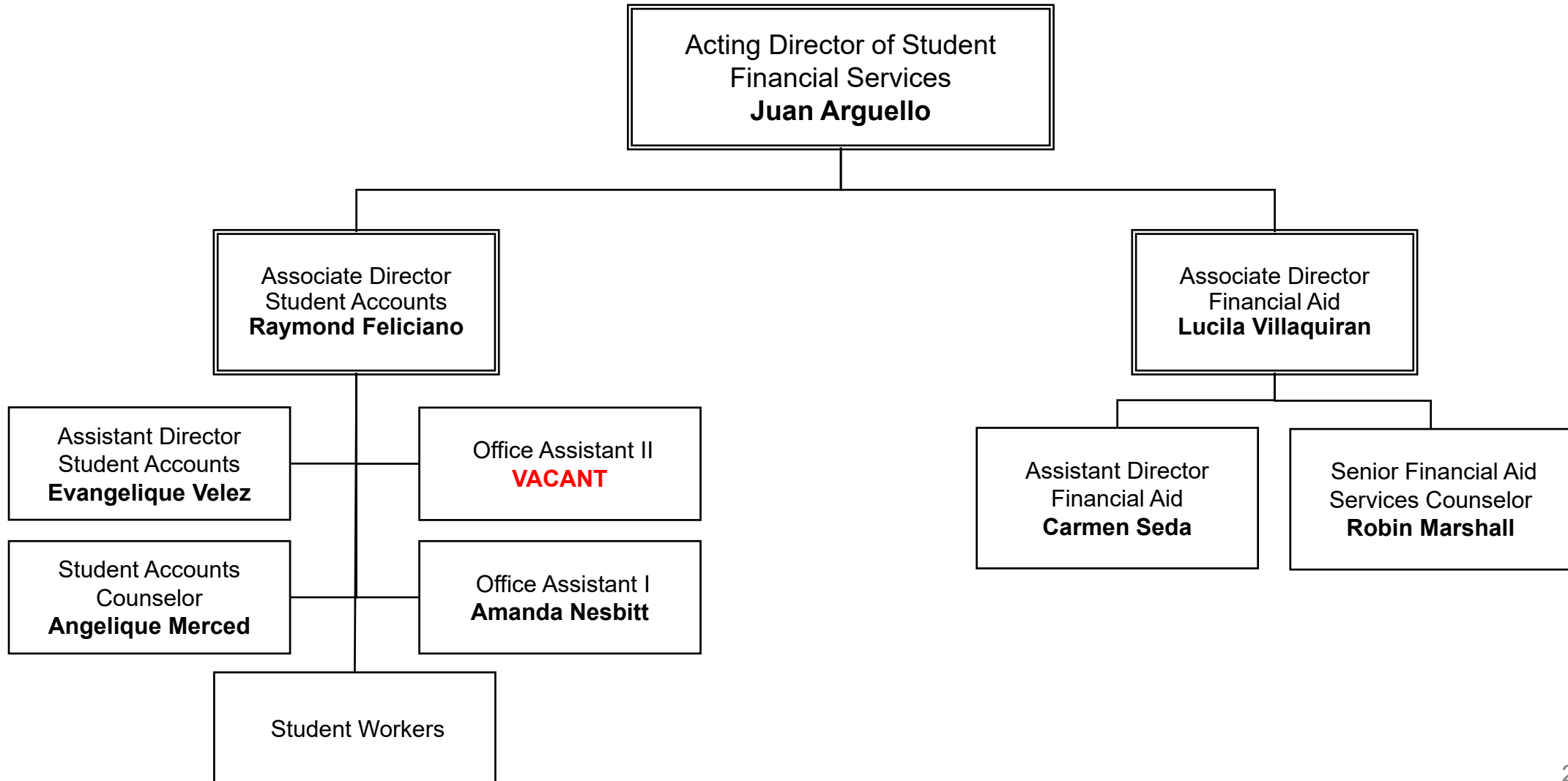


## FINANCIAL SERVICES



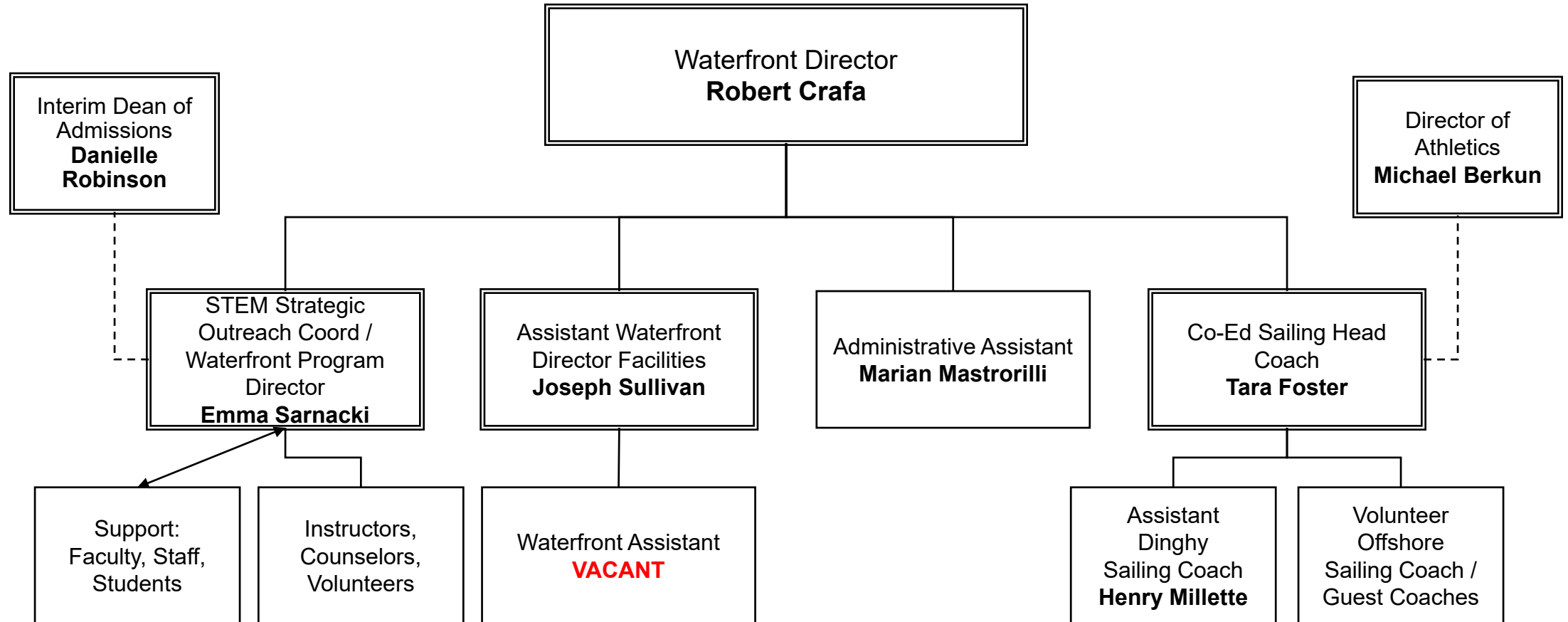


## STUDENT FINANCIAL SERVICES

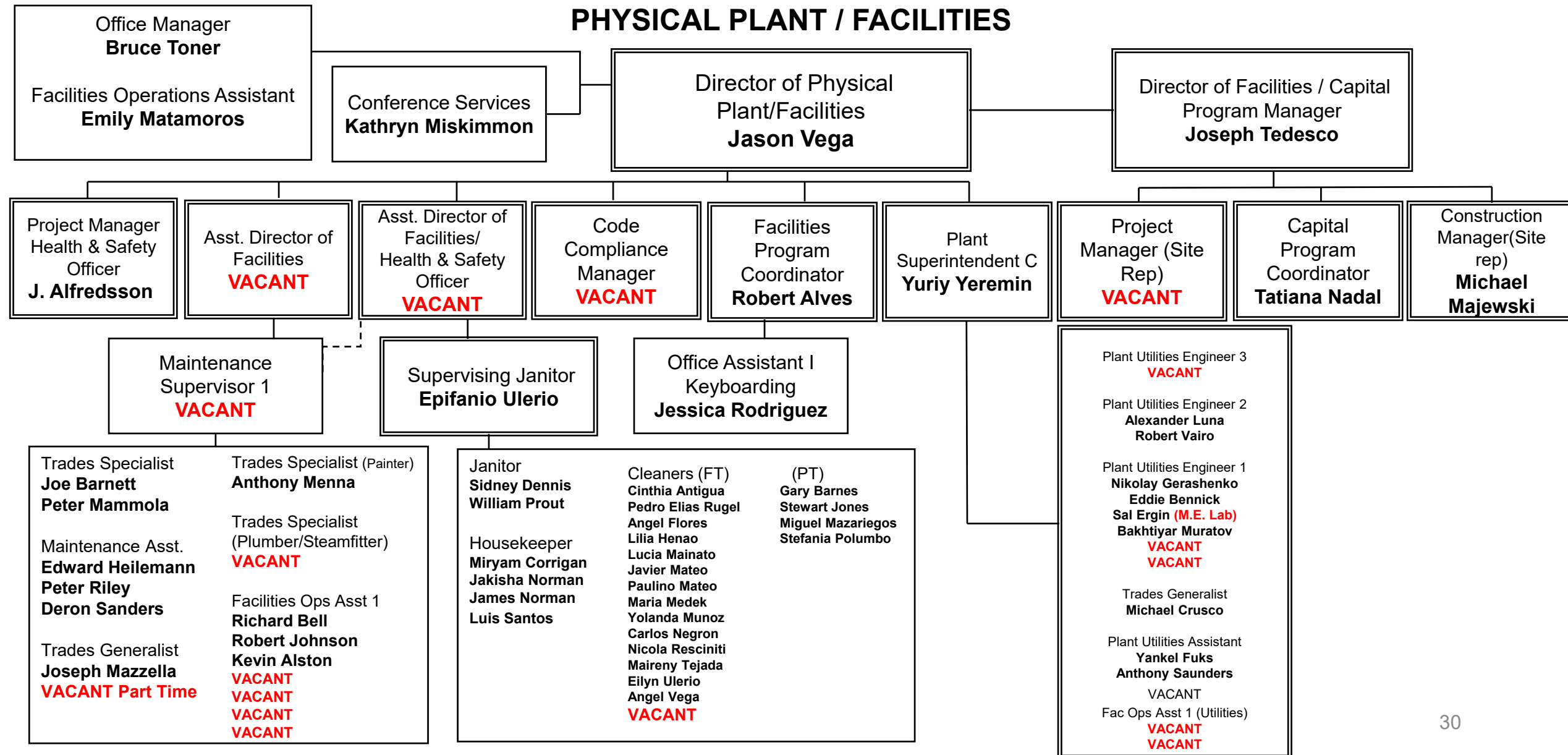




## WATERFRONT

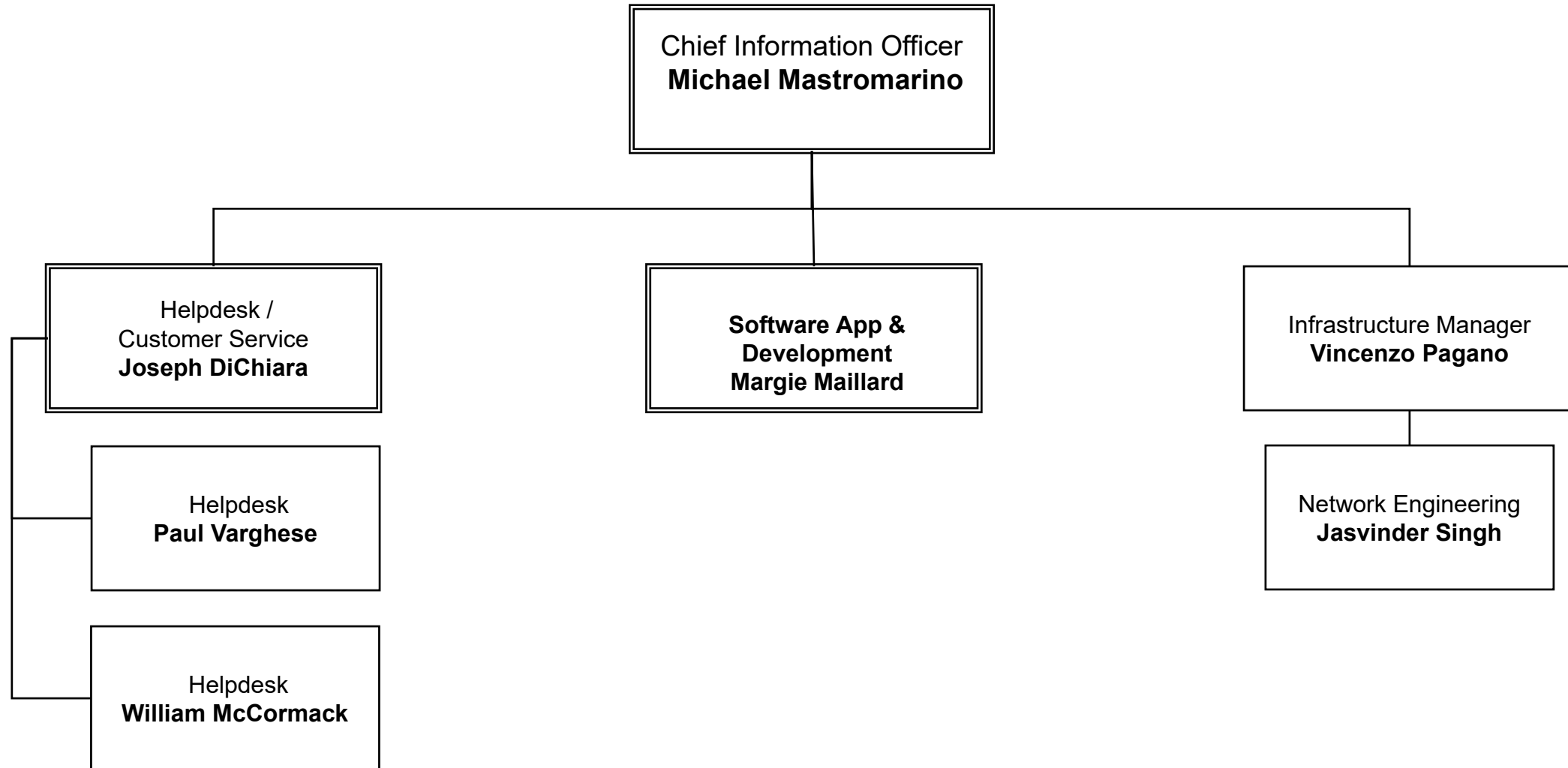


## PHYSICAL PLANT / FACILITIES

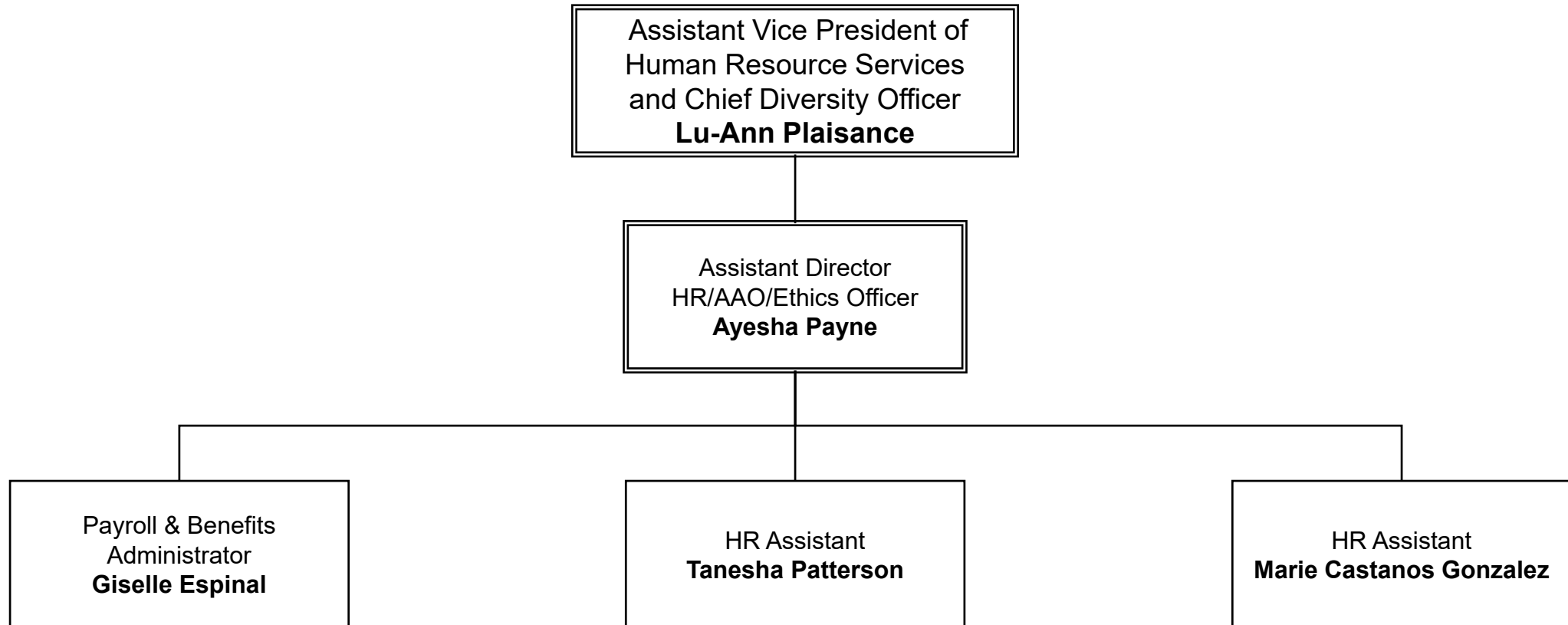




## INFORMATION TECHNOLOGY



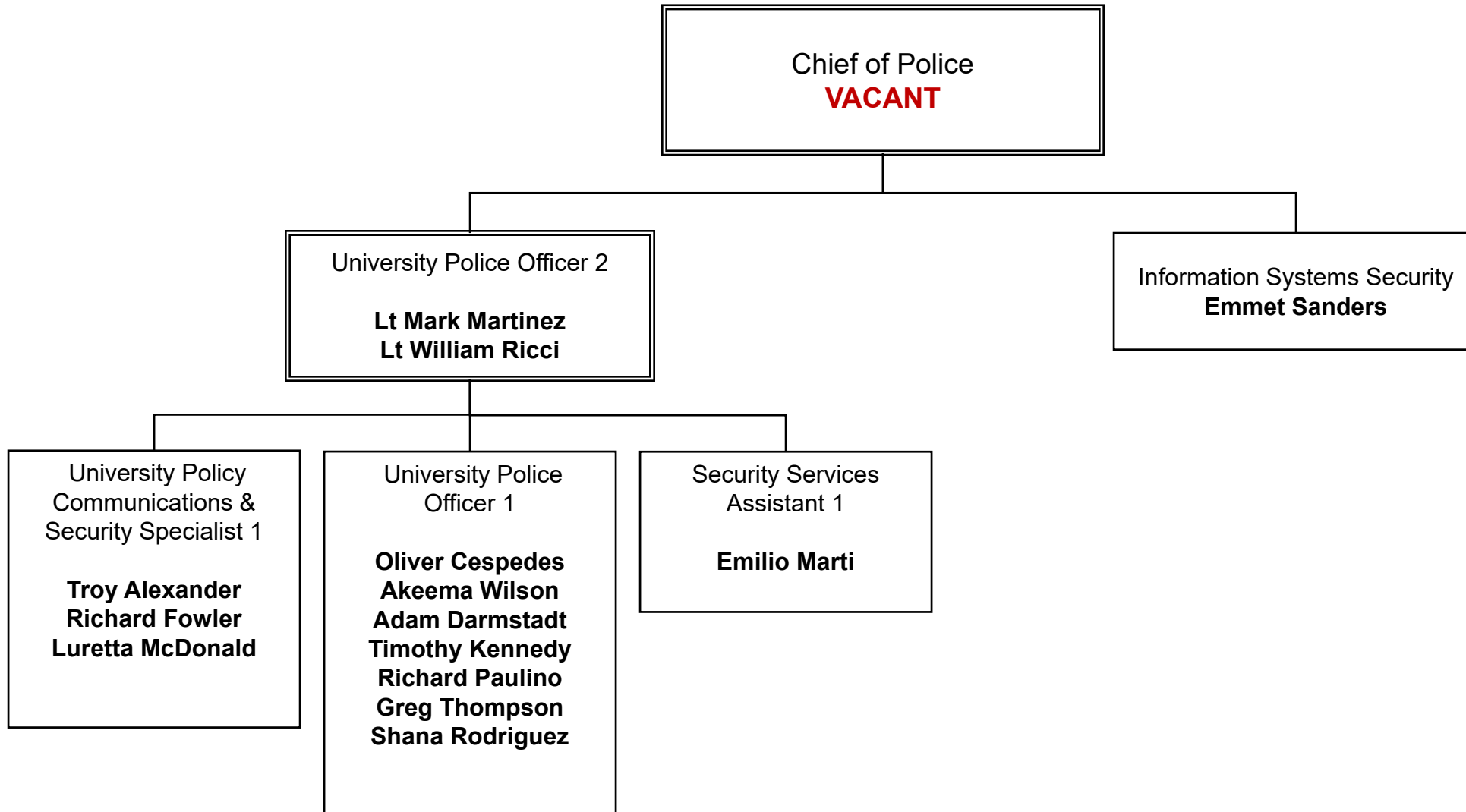
## HUMAN RESOURCE SERVICES



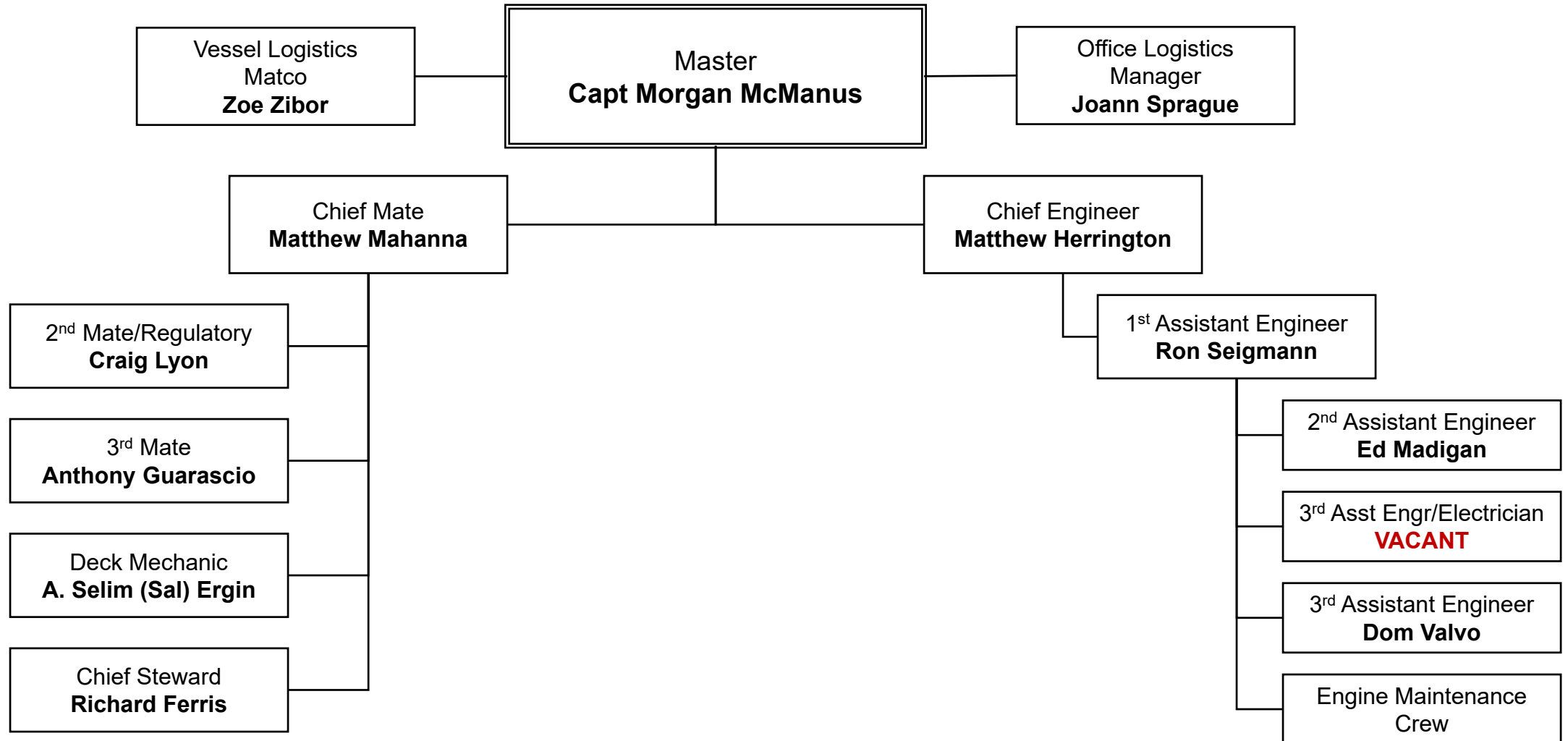




## UNIVERSITY POLICE



## TRAINING SHIP EMPIRE STATE VII





## INSTITUTIONAL ADVANCEMENT

